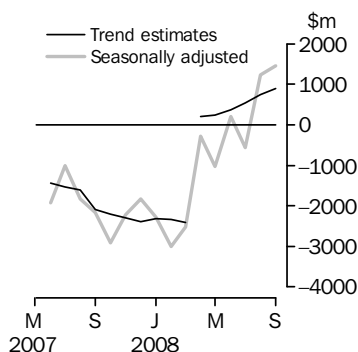


INTERNATIONAL TRADE IN GOODS AND SERVICES

AUSTRALIA

EMBARGO: 11.30AM (CANBERRA TIME) WED 5 NOV 2008

Balance on Goods and Services



KEY FIGURES

	July 2008	August 2008	September 2008	Aug 08 to Sep 08 %
	\$m	\$m	\$m	
BALANCE ON GOODS AND SERVICES				
Trend estimates	537	739	894	21
Seasonally adjusted	-550	1 240	1 460	18
CREDITS (Exports of goods & services)				
Trend estimates	24 090	24 707	25 226	2
Seasonally adjusted	23 372	24 656	26 507	8
DEBITS (Imports of goods & services)				
Trend estimates	23 554	23 968	24 332	2
Seasonally adjusted	23 922	23 416	25 047	7

KEY POINTS

BALANCE ON GOODS AND SERVICES

- The trend estimate of the *balance on goods and services* was a surplus of \$894m in September 2008, an increase of \$155m on a revised surplus in August 2008.
- In seasonally adjusted terms, the *balance on goods and services* was a surplus of \$1,460m in September 2008, an increase of \$220m on a revised surplus in August 2008.
- The seasonally adjusted surplus was primarily due to the strong increase in *non rural goods credits* outweighing the strong increase in *intermediate and other merchandise goods debits*.

CREDITS (EXPORTS OF GOODS & SERVICES)

- Seasonally adjusted, *goods and services credits* rose \$1,851m (8%) to \$26,507m. *Non-rural goods* rose \$1,671m (10%) and *other goods* rose \$39m (3%), while *rural goods* fell \$12m (1%). *Services credits* rose \$152m (3%).
- The rise in *non-rural goods* was largely driven by *metal ores and minerals*, which rose \$941m (19%) and *coal, coke and briquettes* which rose \$626m (14%).

DEBITS (IMPORTS OF GOODS & SERVICES)

- Seasonally adjusted, *goods and services debits* rose \$1,631m (7%) to \$25,047m. *Intermediate and other merchandise goods* rose \$1,132m (13%), *capital goods* rose \$216m (5%), *other goods* rose \$175m (16%) and *consumption goods* rose \$27m (1%). *Services debits* rose \$80m (2%).
- The main contributor to the increase in *intermediate and other merchandise goods* was *fuels and lubricants*, which rose \$547m (20%).

INQUIRIES

For further information contact Selvi Sekhar on Canberra (02) 6252 5540 for goods, and Karen McGuigan on Canberra (02) 6252 5415 for services.

NOTES

FORTHCOMING ISSUES

ISSUE

RELEASE DATE

October 2008	4 December 2008
November 2008	8 January 2009
December 2008	3 February 2009
January 2009	5 March 2009
February 2009	2 April 2009
March 2009	7 May 2009

.....

REVISIONS

Revisions have been made to incorporate the latest available data relating to merchandise trade and international trade in services. In original terms, these revisions have :

- decreased the surplus on goods and services for August 2008 by \$181m, primarily due to the incorporation of the latest Overseas Arrivals and Departures data
- increased the deficit on goods and services for 2007–08 by \$698m, with:
 - goods credits decreasing by \$554m (see Coal and Iron Ore Prices below)
 - goods debits increasing by \$144m.

COAL AND IRON ORE PRICES

Since the May 2008 issue the balance of payments coal and iron ore series have been adjusted to account for delays in exporters finalising Customs entries for new contract prices. These adjustments are reviewed as new information becomes available.

In this issue, the adjustments for coal applying in the August 2008 issue (\$200m for both April and May 2008 and \$100m for June) have now been removed as no further revisions to Customs entries are expected for these months. For iron ore, the April adjustment remains at \$300m, the May and June adjustments have been reduced by \$50m each to \$250m each and the \$100m adjustment for July has been removed. It is expected that these adjustments will remain unless revised Customs entries are received.

Trend Breaks of \$725m and \$2b have been applied to the April 2008 month for the balance of payments metal ores and coal series, respectively. These trend breaks are an estimate of the change of level that has occurred in these series. The size of these trend breaks may be reassessed in coming months and caution should be used when interpreting these series.

CHANGES IN THIS ISSUE

Refer to page 4 for details of the changed treatment of certain Confidentiality Restrictions.

DETAILED SERVICES DATA

The trade in services data cubes listed under Time series data on page 5, for data on a financial year basis to 2007–08 have been updated concurrently with this issue. In addition, two new data cubes have been included showing more detailed travel data for all countries.

Brian Pink
Australian Statistician

CONTENTS

page

Changes in this issue	4
Time series data	5

ANALYSIS

Analysis and comments	6
---------------------------------	---

TABLES

INTERNATIONAL TRADE IN GOODS AND SERVICES – BALANCE OF PAYMENTS BASIS

1 Goods and services, summary, seasonally adjusted and trend estimates	11
2 Goods and services, summary, original	12
3 Goods credits, original	13
4 Goods debits, original	14
5 Goods credits, seasonally adjusted	15
6 Goods debits, seasonally adjusted	16
7 Goods credits, trend estimates	17
8 Goods debits, trend estimates	18
9 Services, summary, original	19
10 Services, summary, seasonally adjusted and trend estimates	20
11 Services, original, quarterly	21

INTERNATIONAL MERCHANDISE TRADE – RECORDED TRADE BASIS

12 International merchandise exports, by commodity	22
13 International merchandise imports, by commodity	25
14 International merchandise trade, by country and country groups	28
15 International merchandise trade, by state	29

OTHER TABLES

16 Period average exchange rates per Australian dollar	30
---	----

OTHER INFORMATION

Explanatory Notes	31
Appendix - Related articles	35

CHANGES IN THIS ISSUE

CONFIDENTIALITY RESTRICTIONS

As advised in the September 2008 issue of *International Merchandise Imports, Australia* (cat. no 5439.0), the method used to confidentialise data for Imports of goods has changed. Data that have the confidentiality restrictions 'No commodity details' or 'No value details' are aggregated into a single confidential commodity code. For data prior to September 2008, these data are added back into the relevant state total and country total (i.e. these totals show the correct level of trade). From September 2008 these confidential data are not added back. Instead the confidential data are published as 'No country details' in the country totals and 'State not available for publication' in the state totals. Therefore, country and state totals from September 2008 may not represent the actual amount of trade in each country / state but only the trade in commodities without a 'No commodity details' or 'No value details' restriction. This change is necessary to ensure the confidentiality of data. Refer to the *CCL attachment 1 (Appendix)* (cat. no. 5372.0.55.001) for more details about these restrictions.

As a result of this new confidentiality arrangement, a new item 'State not available for publication' has been included in the imports part of publication table 15. A new Series ID A2529326T has been added to Time Series Spreadsheet table 15b for this item. The 'No country details' item is an existing series in table 14b. In addition, SITC item 792, Aircraft and associated equipment, has been removed from the imports major commodities list in table 13.

In addition, in the balance of payments series, the confidential items are included in the civil aircraft series from September 2008. For previous periods the confidential items are included in the other merchandise goods series.

These changes impact on the presentation of publication tables 4, 6, 8, 13, 14 and 15; the equivalent time series spreadsheets; and time series spreadsheet 37.

TIME SERIES DATA

TIME SERIES DATA

Data available free on the ABS web site include longer time series of tables in this publication and the additional spreadsheets and data cubes listed below.

31 Merchandise exports by Broad Economic Category (BEC)

32 Merchandise exports by industry of origin (ANZSIC)

33 Merchandise imports by Broad Economic Category (BEC)

34 Merchandise imports by Balance of Payments Broad Economic Category (BoPBEC)

35 Merchandise imports by industry of origin (ANZSIC)

36 Merchandise exports, state by country and country groups

37 Merchandise imports, state by country and country groups

91 Monthly seasonal adjustment factors and forward factors for 12 months.

TRADE IN SERVICES DATA CUBES

Trade in Services data are usually updated on an annual basis - with the March issue of 5368.0 for calendar year and with the September issue for financial year.

For financial year data cubes see cat. no. 5368.0.55.003 and for calendar year see 5368.0.55.004. The following tables are included in both sets of data cubes:

1 International trade in services, credits, state by year

2 International trade in services, credits, year by state

3 International trade in services, debits, state by year

4 International trade in services, debits, year by state

5 International trade in services, credits, year by country and service

6 International trade in services, credits, service by year and by country

7 International trade in services, debits, year by country and service

8 International trade in services, debits, service by year and by country

9 International trade in services, year by detailed service

10 International trade in services, credits, year by country and travel service

11 International trade in services, debits, year by country and travel service.

ANALYSIS AND COMMENTS

BALANCE ON GOODS AND SERVICES

The trend estimate of the balance on goods and services in September 2008 was a surplus of \$894m, an increase of \$155m (21%) on the revised surplus in August 2008.

In seasonally adjusted terms, the balance on goods and services in September 2008 was a surplus of \$1,460m, an increase of \$220m (18%) on the revised surplus in August 2008.

The sum of the seasonally adjusted balances for the three months to September 2008 was a surplus of \$2,150m, a turnaround of \$3,249m on the deficit of \$1,099m for the three months to June 2008. However, if the seasonal factors used in compiling quarterly Balance of Payments are applied, the September quarter 2008 surplus was \$1,433m a turnaround of \$2,698m on the revised June quarter 2008 deficit of \$1,265m.

The Australian dollar depreciated by 7% against the United States dollar between August and September 2008 (on a period average basis).

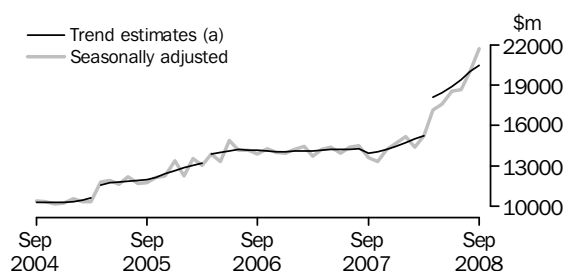
EXPORTS OF GOODS AND SERVICES

The trend estimate of goods and services credits rose \$519m (2%) between August and September to \$25,226m.

In seasonally adjusted terms, goods and services credits rose \$1,851m (8%) to \$26,507m. Non-rural goods rose \$1,671m (10%) and other goods rose \$39m (3%), while rural goods fell \$12m (1%). Services credits rose \$152m (3%).

Exports of goods

GOODS CREDITS



(a) Trend breaks of \$819m to April 2005, \$500m to April 2006 and \$2,725m to April 2008 have been applied.

RURAL GOODS

In trend terms, exports of rural goods fell \$21m (1%) to \$2,236m.

In seasonally adjusted terms, export of rural goods fell \$12m (1%) to \$2,250m.

The component contributing to the fall in the seasonally adjusted estimates was cereal grains and cereal preparations, down \$82m (16%).

Partly offsetting this were:

- meat and meat preparations, up \$39m (7%)
- other rural, up \$26m (3%).

In original terms, exports of rural goods fell \$36m (2%) to \$2,248m.

ANALYSIS AND COMMENTS *continued*

Exports of goods continued

NON-RURAL GOODS

In trend terms, exports of non-rural goods rose \$441m (3%) to \$16,738m.

In seasonally adjusted terms, exports of non-rural goods rose \$1,671m (10%) to \$17,959m.

The main components contributing to the rise in the seasonally adjusted estimates were:

- metal ores and minerals, up \$941m (19%)
- coal, coke and briquettes, up \$626m (14%)
- other manufactures, up \$60m (4%).

Partly offsetting these increases was the machinery component, down \$42m (5%).

In original terms, exports of non-rural goods rose \$1,306m (8%) to \$17,998m.

Non-agglomerated iron ore increased by \$433m with volumes up 4% and prices up 10%.

Metallurgical coal increased by \$290m with volumes down 3% and prices up 11%.

OTHER GOODS

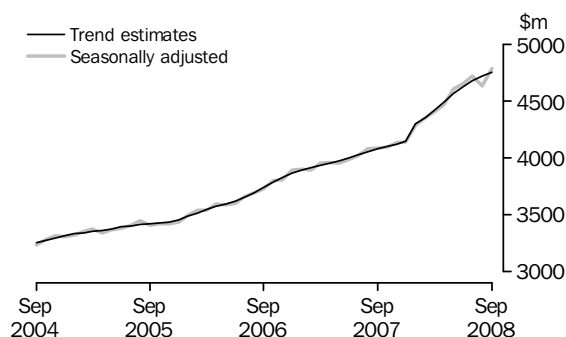
In trend terms, exports of other goods rose \$68m (5%) to \$1,502m.

In seasonally adjusted terms, exports of other goods rose \$39m (3%) to \$1,512m with non-monetary gold, up \$37m (3%).

In original terms, exports of other goods rose \$40m (3%) to \$1,521m.

Exports of services

SERVICES CREDITS



In trend terms, services credits rose \$32m (1%) to \$4,750m.

In seasonally adjusted terms, services credits rose \$152m (3%) to \$4,786m.

All components contributed to the rise in the seasonally adjusted estimates with:

- travel services, up \$117m (5%)
- transportation services, up \$27m (3%)
- other services, up \$8m (1%).

In seasonally adjusted terms, tourism related services credits rose \$140m (5%) to \$3,024m.

IMPORTS OF GOODS AND SERVICES

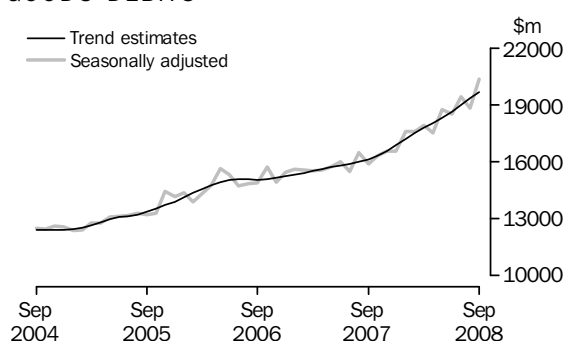
The trend estimate of goods and services debits rose \$364m (2%) between August and September to \$24,332m.

In seasonally adjusted terms, goods and services debits rose \$1,631m (7%) to \$25,047m. Intermediate and other merchandise goods rose \$1,132m (13%), capital goods rose \$216m (5%), other goods rose \$175m (16%) and consumption goods rose \$27m (1%). Services debits rose \$80m (2%).

Details of preliminary goods debits chain volume measures and price outcomes are not available for the release of this issue. These details will be available from the ABS web site on 13 November 2008 as Additional Information on the summary tab to this issue.

Imports of goods

GOODS DEBITS



CONSUMPTION GOODS

In trend terms, imports of consumption goods fell \$5m to \$5,044m.

In seasonally adjusted terms, imports of consumption goods rose \$27m (1%) to \$5,077m.

The main components contributing to the rise in the seasonally adjusted estimates were:

- food and beverages, mainly for consumption, up \$51m (7%)
- toys, books and leisure goods, up \$39m (10%).

The only component to decrease was non-industrial transport equipment, down \$109m (8%).

In original terms, imports of consumption goods rose \$510m (10%) to \$5,582m.

CAPITAL GOODS

In trend terms, imports of capital goods rose \$87m (2%) to \$4,291m.

In seasonally adjusted terms, imports of capital goods rose \$216m (5%) to \$4,459m.

The main component contributing to the rise in the seasonally adjusted estimates was civil aircraft, up \$130m (34%). Refer to Changes in this issue on page 4 for details of the changed treatment of confidential items which impacts on the civil aircraft component.

In original terms, imports of capital goods rose \$347m (8%) to \$4,558m.

ANALYSIS AND COMMENTS *continued*

Imports of goods continued

INTERMEDIATE AND OTHER MERCHANDISE GOODS

In trend terms, imports of intermediate and other merchandise goods rose \$185m (2%) to \$9,166m.

In seasonally adjusted terms, imports of intermediate and other merchandise goods rose \$1,132m (13%) to \$9,586m.

The main components contributing to the rise in the seasonally adjusted estimates were:

- fuels and lubricants, up \$547m (20%)
- other merchandise goods, up \$217m due to military equipment
- iron and steel, up \$123m (26%)
- processed industrial supplies n.e.s., up \$115m (6%).

In original terms, crude petroleum oils increased \$81m (5%) with volumes up 6% and prices down 2%. Refined petroleum oils increased \$409m (44%) with volumes up 54% and prices down 7%. Contributing to the increase in refined petroleum oils were:

- gasoline, up \$154m
- fuel oils, up \$132m.

In original terms, imports of intermediate and other merchandise goods rose \$1,447m (17%) to \$9,890m.

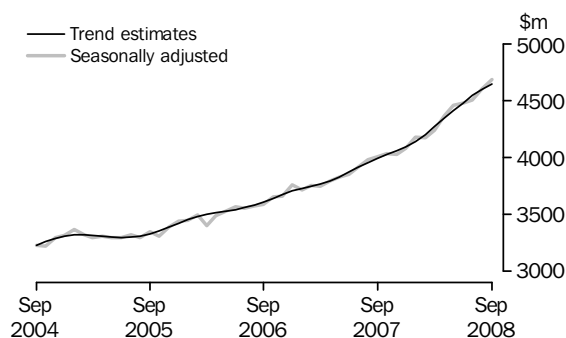
OTHER GOODS

In trend terms, imports of other goods rose \$53m (5%) to \$1,186m.

In both original terms and seasonally adjusted terms, imports of other goods rose \$175m (16%) to \$1,240m. The main component contributing to the rise was non-monetary gold, up \$168m (20%).

Imports of services

SERVICES DEBITS



In trend terms, services debits rose \$44m (1%) to \$4,645m.

In seasonally adjusted terms, services debits rose \$80m (2%) to \$4,685m.

All components contributed to the rise in the seasonally adjusted estimates with:

- transportation services, up \$36m (2%)
- travel services, up \$31m (2%)
- other services, up \$14m (1%).

In seasonally adjusted terms, tourism related services debits rose \$32m (1%) to \$2,297m.

GOODS AND SERVICES(a), Summary: **Seasonally Adjusted and Trend Estimates**

Months	BALANCE	CREDITS					DEBITS					
	On goods and services	Total goods and services	Total goods	Rural goods(b)	Non-rural and other goods(b)	Total services	Total goods and services	Total goods	Con- sumption goods	Capital goods	Inter- mediate and other goods	Total services
	\$m	\$m	\$m	\$m	\$m	\$m	\$m	\$m	\$m	\$m	\$m	\$m
SEASONALLY ADJUSTED												
2007												
July	-1 002	18 394	14 377	1 964	12 413	4 017	-19 395	-15 483	-4 622	-3 276	-7 585	-3 912
August	-1 838	18 599	14 520	1 871	12 649	4 079	-20 437	-16 459	-4 757	-3 712	-7 990	-3 978
September	-2 168	17 715	13 632	1 995	11 637	4 083	-19 883	-15 878	-4 782	-3 697	-7 399	-4 005
October	-2 911	17 421	13 330	1 893	11 437	4 091	-20 332	-16 298	-4 747	-3 482	-8 068	-4 034
November	-2 224	18 343	14 213	1 944	12 268	4 131	-20 568	-16 539	-4 902	-3 699	-7 938	-4 028
December	-1 834	18 824	14 683	2 140	12 543	4 141	-20 659	-16 577	-4 982	-3 840	-7 755	-4 082
2008												
January	-2 272	19 486	15 202	2 147	13 054	4 284	-21 758	-17 580	-5 117	-3 742	-8 722	-4 178
February	-3 013	18 755	14 403	2 126	12 277	4 352	-21 769	-17 599	-5 058	-3 994	-8 546	-4 170
March	-2 515	19 618	15 215	2 248	12 967	4 403	-22 133	-17 894	-5 201	-4 214	-8 480	-4 238
April	-275	21 618	17 147	2 416	14 731	4 471	-21 892	-17 527	-4 908	-3 768	-8 851	-4 366
May	-1 023	22 184	17 578	2 355	15 223	4 606	-23 206	-18 751	-5 225	-3 823	-9 703	-4 456
June	199	23 186	18 538	2 252	16 285	4 648	-22 986	-18 505	-5 200	-4 136	-9 169	-4 481
July	-550	23 372	18 656	2 209	16 448	4 716	-23 922	-19 416	-5 108	-4 017	-10 291	-4 506
August	1 240	24 656	20 022	2 262	17 761	4 634	-23 416	-18 811	-5 050	-4 243	-9 519	-4 605
September	1 460	26 507	21 721	2 250	19 471	4 786	-25 047	-20 362	-5 077	-4 459	-10 826	-4 685
TREND ESTIMATES												
2007												
July	-1 533	18 273	14 248	1 906	12 343	4 024	-19 806	-15 892	-4 642	-3 558	-7 693	-3 914
August	-1 615	18 325	14 273	1 910	12 363	4 052	-19 940	-15 985	-4 688	-3 573	-7 725	-3 955
September	-2 083	18 027	13 950	1 929	12 021	4 077	-20 109	-16 117	-4 752	-3 592	-7 773	-3 992
October	-2 198	18 145	14 046	1 958	12 087	4 100	-20 343	-16 318	-4 830	-3 634	-7 854	-4 025
November	-2 300	18 333	14 212	2 001	12 211	4 121	-20 633	-16 576	-4 911	-3 706	-7 959	-4 057
December	-2 383	18 591	14 444	2 061	12 384	4 146	-20 974	-16 881	-4 982	-3 789	-8 110	-4 093
2008												
January	-2 308	19 025	14 726	2 134	12 592	4 299	-21 333	-17 192	-5 042	-3 858	-8 291	-4 141
February	-2 339	19 365	15 012	2 208	12 804	4 353	-21 704	-17 502	-5 084	-3 909	-8 509	-4 202
March	-2 400	19 656	15 235	2 266	12 969	4 421	-22 056	-17 785	-5 101	-3 939	-8 745	-4 271
April(c)	211	22 598	18 104	2 297	15 807	4 494	-22 387	-18 044	-5 093	-3 955	-8 996	-4 343
May	250	22 992	18 428	2 302	16 126	4 564	-22 741	-18 327	-5 076	-3 982	-9 270	-4 414
June	375	23 507	18 883	2 292	16 591	4 625	-23 132	-18 651	-5 062	-4 037	-9 551	-4 481
July	537	24 090	19 414	2 275	17 140	4 676	-23 554	-19 009	-5 054	-4 116	-9 840	-4 544
August	739	24 707	19 989	2 257	17 731	4 718	-23 968	-19 367	-5 049	-4 204	-10 114	-4 601
September	894	25 226	20 476	2 236	18 240	4 750	-24 332	-19 687	-5 044	-4 291	-10 352	-4 645

(a) For sign conventions, see paragraph 11 of the Explanatory Notes.

(b) For all time periods, estimates for sugar, sugar preparations and honey are included in Non-rural and other goods.

(c) A trend break of \$2,725m has been applied to Non-rural and other goods credits and related aggregates in April 2008.

GOODS AND SERVICES(a), Summary: **Original**

	BALANCE	CREDITS					DEBITS					
	<i>On goods and services</i>	<i>Total goods and services</i>	<i>Total goods</i>	<i>Rural goods(b)</i>	<i>Non-rural and other goods(b)</i>	<i>Total services</i>	<i>Total goods and services</i>	<i>Total goods</i>	<i>Con- sumption goods</i>	<i>Capital goods</i>	<i>Inter- mediate and other goods</i>	<i>Total services</i>
	\$m	\$m	\$m	\$m	\$m	\$m	\$m	\$m	\$m	\$m	\$m	\$m
FINANCIAL YEAR												
2005-06	-14 520	196 274	154 425	25 266	129 159	41 849	-210 794	-169 716	-50 221	-40 077	-79 418	-41 078
2006-07	-12 757	215 695	169 514	25 075	144 439	46 181	-228 452	-184 024	-54 913	-41 765	-87 346	-44 428
2007-08	-20 619	234 308	182 989	25 470	157 519	51 319	-254 927	-204 964	-59 383	-45 352	-100 229	-49 963
MONTHS												
2007												
July	-1 028	18 501	14 412	1 892	12 520	4 089	-19 529	-15 480	-4 625	-3 278	-7 577	-4 049
August	-2 119	18 952	14 797	1 862	12 935	4 155	-21 071	-17 107	-5 048	-3 800	-8 259	-3 964
September	-2 336	17 789	13 819	2 005	11 814	3 970	-20 125	-15 822	-4 938	-3 599	-7 285	-4 303
October	-3 901	18 042	13 812	1 943	11 869	4 230	-21 943	-17 732	-5 543	-3 716	-8 473	-4 211
November	-3 235	18 378	14 188	1 962	12 226	4 190	-21 613	-17 687	-5 485	-4 085	-8 117	-3 926
December	-318	19 823	15 699	2 250	13 449	4 124	-20 141	-15 886	-4 739	-3 794	-7 353	-4 255
2008												
January	-3 761	17 760	13 562	1 829	11 733	4 198	-21 521	-17 113	-4 844	-3 526	-8 743	-4 408
February	-2 400	18 268	13 757	2 137	11 620	4 511	-20 668	-16 885	-4 812	-3 640	-8 433	-3 783
March	-895	20 143	15 582	2 370	13 212	4 561	-21 038	-17 007	-4 594	-4 120	-8 293	-4 031
April	-723	21 307	16 773	2 420	14 353	4 534	-22 030	-17 794	-4 958	-3 749	-9 087	-4 236
May	-226	22 607	18 154	2 630	15 524	4 453	-22 833	-18 573	-5 025	-3 820	-9 728	-4 260
June	323	22 738	18 434	2 170	16 264	4 304	-22 415	-17 878	-4 772	-4 225	-8 881	-4 537
July	-803	23 588	18 790	2 148	16 642	4 798	-24 391	-19 748	-5 286	-4 050	-10 412	-4 643
August	1 883	25 207	20 457	2 284	18 173	4 750	-23 324	-18 791	-5 072	-4 211	-9 508	-4 533
September	50	26 408	21 767	2 248	19 519	4 641	-26 358	-21 270	-5 582	-4 558	-11 130	-5 088
FINANCIAL YEAR TO DATE												
3 months ended												
September												
2007	-5 483	55 242	43 028	5 759	37 269	12 214	-60 725	-48 409	-14 611	-10 677	-23 121	-12 316
2008	1 130	75 203	61 014	6 680	54 334	14 189	-74 073	-59 809	-15 940	-12 819	-31 050	-14 264

(a) For sign conventions, see paragraph 11 of the Explanatory Notes.

(b) For all time periods, estimates for sugar, sugar preparations and honey are included in Non-rural and other goods.

							3 MONTHS ENDED SEPTEMBER		Change
	2005-06	2006-07	2007-08	Jul 2008	Aug 2008	Sep 2008	2007	2008	
	\$m	\$m	\$m	\$m	\$m	\$m	\$m	\$m	%
Total goods credits	154 425	169 514	182 989	18 790	20 457	21 767	43 028	61 014	41.8
<i>Rural goods</i>	25 266	25 075	25 470	2 148	2 284	2 248	5 759	6 680	16.0
Meat and meat preparations	6 709	7 078	6 540	576	575	649	1 601	1 800	12.4
Cereal grains and cereal preparations	4 852	4 171	4 992	489	511	375	900	1 375	52.8
Wool and sheepskins	2 544	3 065	2 796	196	134	207	564	537	-4.8
Other rural(a)	11 161	10 761	11 142	887	1 064	1 017	2 694	2 968	10.2
<i>Non-rural goods</i>	118 210	131 813	143 321	15 025	16 692	17 998	33 903	49 715	46.6
Metal ores and minerals	28 934	35 315	41 641	4 438	4 798	5 582	9 375	14 818	58.1
Coal, coke and briquettes	24 352	21 928	24 556	3 897	4 664	5 130	5 106	13 691	168.1
Other mineral fuels	13 218	15 642	18 798	1 945	2 007	1 951	4 059	5 903	45.4
Metals (excl. non-monetary gold)	11 271	14 820	14 036	1 203	1 344	1 392	3 647	3 939	8.0
Machinery	8 066	8 422	8 791	737	820	784	2 305	2 341	1.6
Transport equipment	5 314	4 648	5 719	537	563	547	1 390	1 647	18.5
Other manufactures	14 996	16 268	16 999	1 479	1 536	1 623	4 492	4 638	3.3
Other non-rural (incl. sugar and beverages)	12 059	14 770	12 781	789	960	989	3 529	2 738	-22.4
<i>Other goods</i>	10 949	12 626	14 198	1 617	1 481	1 521	3 366	4 619	37.2
Goods for processing	368	417	276	31	40	36	55	107	94.5
Repairs on goods	74	90	103	9	10	8	25	27	8.0
Goods procured in ports by carriers	1 420	1 379	1 547	142	152	161	344	455	32.3
Non-monetary gold	9 087	10 740	12 272	1 435	1 279	1 316	2 942	4 030	37.0

(a) For all time periods, estimates for sugar, sugar preparations and honey are included in Other non-rural.

GOODS DEBITS(a): Original

							3 MONTHS ENDED SEPTEMBER		Change
	2005-06	2006-07	2007-08	Jul 2008	Aug 2008	Sep 2008	2007	2008	
	\$m	\$m	\$m	\$m	\$m	\$m	\$m	\$m	%
Total goods debits	-169 716	-184 024	-204 964	-19 748	-18 791	-21 270	-48 409	-59 809	23.5
<i>Consumption goods</i>	-50 221	-54 913	-59 383	-5 286	-5 072	-5 582	-14 611	-15 940	9.1
Food and beverages, mainly for consumption	-6 169	-7 182	-7 838	-666	-656	-800	-1 931	-2 122	9.9
Household electrical items	-4 191	-4 525	-5 051	-506	-388	-468	-1 305	-1 362	4.4
Non-industrial transport equipment	-13 596	-14 894	-16 871	-1 416	-1 388	-1 317	-3 746	-4 121	10.0
Textiles, clothing and footwear	-6 364	-6 805	-7 051	-641	-659	-696	-1 858	-1 996	7.4
Toys, books and leisure goods	-4 057	-4 328	-4 576	-428	-402	-555	-1 182	-1 385	17.2
Consumption goods n.e.s.	-15 844	-17 179	-17 996	-1 629	-1 579	-1 746	-4 589	-4 954	8.0
<i>Capital goods</i>	-40 077	-41 765	-45 352	-4 050	-4 211	-4 558	-10 677	-12 819	20.1
Machinery and industrial equipment	-14 347	-15 330	-16 481	-1 508	-1 599	-1 562	-4 083	-4 669	14.4
ADP equipment	-6 158	-7 008	-7 074	-575	-554	-585	-1 792	-1 714	-4.4
Telecommunications equipment	-5 320	-5 315	-5 789	-473	-426	-614	-1 381	-1 513	9.6
Civil aircraft(b)	-2 967	-1 667	-2 691	-180	-382	-512	-377	-1 074	184.9
Industrial transport equipment n.e.s.	-5 491	-6 454	-7 555	-816	-770	-776	-1 670	-2 362	41.4
Capital goods n.e.s.	-5 794	-5 991	-5 762	-498	-480	-509	-1 374	-1 487	8.2
<i>Intermediate and other merchandise goods</i>	-72 737	-79 923	-90 476	-9 225	-8 443	-9 890	-20 829	-27 558	32.3
Food and beverages, mainly for industry	-651	-819	-923	-84	-90	-109	-214	-283	32.2
Primary industrial supplies n.e.s.	-1 186	-1 552	-1 477	-191	-179	-159	-365	-529	44.9
Fuels and lubricants	-21 014	-21 470	-29 566	-3 627	-2 690	-3 237	-6 006	-9 554	59.1
Parts for transport equipment	-7 315	-8 355	-8 833	-805	-834	-852	-2 192	-2 491	13.6
Parts for ADP equipment	-1 857	-1 620	-1 116	-87	-83	-88	-311	-258	-17.0
Other parts for capital goods	-10 166	-11 780	-11 974	-1 060	-1 037	-1 238	-3 011	-3 335	10.8
Organic and inorganic chemicals	-4 133	-4 406	-4 673	-430	-492	-475	-1 194	-1 397	17.0
Paper and paperboard	-2 303	-2 368	-2 360	-225	-213	-253	-650	-691	6.3
Textile yarn and fabrics	-1 361	-1 366	-1 334	-111	-112	-128	-348	-351	0.9
Iron and steel	-3 240	-3 817	-3 721	-430	-489	-596	-912	-1 515	66.1
Plastics	-2 517	-2 957	-3 064	-267	-262	-300	-763	-829	8.7
Processed industrial supplies n.e.s.	-15 863	-17 794	-20 016	-1 792	-1 813	-2 089	-4 561	-5 694	24.8
Other merchandise goods(b)	-1 131	-1 619	-1 419	-116	-149	-366	-302	-631	108.9
<i>Other goods</i>	-6 681	-7 423	-9 753	-1 187	-1 065	-1 240	-2 292	-3 492	52.4
Goods for processing	-445	-507	-233	-155	—	-1	-9	-156	. .
Repairs on goods	-115	-131	-117	-11	-11	-16	-40	-38	-5.0
Goods procured in ports by carriers	-1 406	-1 468	-1 775	-214	-214	-215	-357	-643	80.1
Non-monetary gold	-4 715	-5 317	-7 628	-807	-840	-1 008	-1 886	-2 655	40.8

. . not applicable

— nil or rounded to zero (including null cells)

(a) For sign conventions, see paragraph 11 of the Explanatory Notes.

(b) From September 2008, commodities subject to a 'no commodity details' or 'no value details' restriction are included in Civil aircraft. For earlier periods, they are included in Other merchandise goods.

GOODS CREDITS: Seasonally Adjusted

	Dec 2007	Jan 2008	Feb 2008	Mar 2008	Apr 2008	May 2008	Jun 2008	Jul 2008	Aug 2008	Sep 2008
	\$m	\$m	\$m	\$m	\$m	\$m	\$m	\$m	\$m	\$m
Total goods credits	14 683	15 202	14 403	15 215	17 147	17 578	18 538	18 656	20 022	21 721
<i>Rural goods</i>	2 140	2 147	2 126	2 248	2 416	2 355	2 252	2 209	2 262	2 250
Meat and meat preparations	579	524	485	534	584	598	566	581	590	629
Cereal grains and cereal preparations	346	398	459	507	561	615	581	493	497	415
Wool and sheepskins	277	258	236	229	219	217	183	214	214	218
Other rural(a)	938	968	946	977	1 052	925	922	922	961	987
<i>Non-rural goods</i>	11 476	11 688	10 930	11 822	13 286	14 152	15 232	14 827	16 288	17 959
Metal ores and minerals	3 173	3 658	2 991	3 444	4 214	4 365	4 432	4 487	4 831	5 772
Coal, coke and briquettes(b)	1 835	1 762	1 483	1 832	2 338	2 927	4 029	3 826	4 579	5 205
Other mineral fuels(c)	1 490	1 645	1 688	1 727	1 703	1 908	2 008	1 810	1 761	1 808
Metals (excl. non-monetary gold)(c)	1 336	873	1 156	1 202	1 151	1 211	1 216	1 227	1 354	1 391
Machinery	732	755	754	706	755	730	691	711	781	739
Transport equipment	470	508	522	449	478	547	492	522	532	554
Other manufactures	1 382	1 490	1 294	1 381	1 558	1 429	1 415	1 434	1 470	1 530
Other non-rural (incl. sugar and beverages)	1 057	997	1 043	1 081	1 089	1 034	950	808	979	960
<i>Other goods</i>	1 067	1 367	1 347	1 145	1 445	1 071	1 053	1 621	1 473	1 512
Goods for processing(d)	30	25	28	18	31	22	23	31	40	36
Repairs on goods(d)	7	6	11	7	11	10	10	9	10	8
Goods procured in ports by carriers(c)	145	135	133	137	140	140	138	146	144	152
Non-monetary gold(d)	885	1 201	1 175	983	1 263	899	882	1 435	1 279	1 316

(a) For all time periods, estimates for sugar, sugar preparations and honey are included in Other non-rural.

(b) Only a length-of-month effect has been applied to this component.

(c) In using these seasonally adjusted series, care should be exercised because of the difficulties associated with reliably estimating the seasonal pattern.

(d) This component is not seasonally adjusted.

GOODS DEBITS(a): Seasonally Adjusted

	Dec 2007	Jan 2008	Feb 2008	Mar 2008	Apr 2008	May 2008	Jun 2008	Jul 2008	Aug 2008	Sep 2008
	\$m	\$m	\$m	\$m	\$m	\$m	\$m	\$m	\$m	\$m
Total goods debits	-16 577	-17 580	-17 599	-17 894	-17 527	-18 751	-18 505	-19 416	-18 811	-20 362
<i>Consumption goods</i>	<i>-4 982</i>	<i>-5 117</i>	<i>-5 058</i>	<i>-5 201</i>	<i>-4 908</i>	<i>-5 225</i>	<i>-5 200</i>	<i>-5 108</i>	<i>-5 050</i>	<i>-5 077</i>
Food and beverages, mainly for consumption	-623	-658	-676	-661	-673	-698	-691	-691	-685	-736
Household electrical items	-403	-412	-422	-383	-401	-408	-571	-503	-383	-395
Non-industrial transport equipment	-1 451	-1 536	-1 440	-1 601	-1 411	-1 497	-1 378	-1 393	-1 434	-1 325
Textiles, clothing and footwear	-595	-590	-597	-578	-587	-620	-607	-594	-606	-626
Toys, books and leisure goods	-400	-411	-384	-390	-376	-433	-404	-421	-382	-421
Consumption goods n.e.s.	-1 510	-1 510	-1 539	-1 587	-1 460	-1 568	-1 550	-1 507	-1 560	-1 575
<i>Capital goods</i>	<i>-3 840</i>	<i>-3 742</i>	<i>-3 994</i>	<i>-4 214</i>	<i>-3 768</i>	<i>-3 823</i>	<i>-4 136</i>	<i>-4 017</i>	<i>-4 243</i>	<i>-4 459</i>
Machinery and industrial equipment	-1 307	-1 422	-1 349	-1 579	-1 413	-1 475	-1 452	-1 496	-1 512	-1 518
ADP equipment	-663	-626	-588	-564	-592	-559	-510	-545	-587	-579
Telecommunications equipment	-452	-470	-479	-474	-449	-466	-455	-491	-474	-572
Civil aircraft(b)	-307	-72	-430	-464	-153	-209	-500	-180	-382	-512
Industrial transport equipment n.e.s.	-623	-669	-643	-636	-667	-623	-718	-819	-804	-798
Capital goods n.e.s.	-488	-483	-506	-497	-494	-492	-501	-486	-484	-480
<i>Intermediate and other merchandise goods</i>	<i>-7 267</i>	<i>-7 807</i>	<i>-7 666</i>	<i>-7 722</i>	<i>-7 920</i>	<i>-8 706</i>	<i>-8 253</i>	<i>-9 104</i>	<i>-8 454</i>	<i>-9 586</i>
Food and beverages, mainly for industry	-79	-80	-83	-68	-77	-88	-78	-80	-89	-106
Primary industrial supplies n.e.s.(c)	-126	-135	-113	-107	-108	-146	-137	-170	-164	-152
Fuels and lubricants(d)	-2 345	-2 653	-2 524	-2 709	-2 781	-3 175	-2 826	-3 627	-2 690	-3 237
Parts for transport equipment	-719	-745	-772	-718	-770	-778	-766	-779	-812	-818
Parts for ADP equipment	-97	-94	-88	-85	-88	-86	-86	-85	-83	-85
Other parts for capital goods	-981	-962	-1 044	-946	-1 037	-1 086	-1 011	-1 014	-1 063	-1 130
Organic and inorganic chemicals	-330	-414	-381	-349	-384	-402	-457	-431	-470	-484
Paper and paperboard	-190	-179	-197	-204	-189	-207	-207	-208	-208	-221
Textile yarn and fabrics	-117	-114	-111	-114	-108	-108	-104	-105	-109	-117
Iron and steel	-269	-302	-264	-310	-339	-354	-393	-424	-477	-600
Plastics	-251	-245	-244	-248	-261	-266	-273	-269	-267	-281
Processed industrial supplies n.e.s.	-1 656	-1 746	-1 633	-1 750	-1 684	-1 908	-1 801	-1 797	-1 874	-1 989
Other merchandise goods(b)	-107	-138	-211	-114	-94	-102	-114	-116	-149	-366
<i>Other goods</i>	<i>-488</i>	<i>-915</i>	<i>-880</i>	<i>-758</i>	<i>-931</i>	<i>-997</i>	<i>-916</i>	<i>-1 187</i>	<i>-1 065</i>	<i>-1 240</i>
Goods for processing(d)	-1	-11	-49	4	-4	-141	-7	-155	—	-1
Repairs on goods(d)	-8	-5	-5	-8	-10	-13	-9	-11	-11	-16
Goods procured in ports by carriers(d)	-137	-147	-147	-148	-188	-188	-187	-214	-214	-215
Non-monetary gold(e)	-342	-752	-679	-606	-729	-655	-713	-807	-840	-1 008

— nil or rounded to zero (including null cells)

(a) For sign conventions, see paragraph 11 of the Explanatory Notes.

(b) From September 2008, commodities subject to a 'no commodity details' or 'no value details' restriction are included in Civil aircraft. For earlier periods, they are included in Other merchandise goods. These components are not seasonally adjusted.

(c) In using these seasonally adjusted series, care should be exercised because of the difficulties associated with reliably estimating the seasonal pattern.

(d) These components are not seasonally adjusted.

(e) From October 1995, this component is not seasonally adjusted.

	Dec 2007	Jan 2008	Feb 2008	Mar 2008	Apr 2008	May 2008	Jun 2008	Jul 2008	Aug 2008	Sep 2008
	\$m	\$m	\$m	\$m	\$m	\$m	\$m	\$m	\$m	\$m
Total goods credits	14 444	14 726	15 012	15 235	18 104	18 428	18 883	19 414	19 989	20 476
<i>Rural goods</i>	2 061	2 134	2 208	2 266	2 297	2 302	2 292	2 275	2 257	2 236
Meat and meat preparations	533	533	537	545	556	569	583	593	602	607
Cereal grains and cereal preparations	336	391	456	514	552	561	549	526	498	468
Wool and sheepskins	256	254	245	231	219	211	208	208	209	211
Other rural(a)	935	956	971	976	970	960	952	948	949	950
<i>Non-rural goods</i>	11 178	11 346	11 544	11 717	14 562	14 865	15 287	15 774	16 297	16 738
Metal ores and minerals(b)	3 164	3 247	3 335	3 399	4 177	4 301	4 493	4 725	4 977	5 188
Coal, coke and briquettes(c)	1 698	1 704	1 718	1 736	3 731	3 855	4 042	4 260	4 496	4 691
Other mineral fuels	1 571	1 609	1 667	1 737	1 799	1 838	1 854	1 855	1 846	1 831
Metals (excl. non-monetary gold)	1 110	1 112	1 126	1 142	1 165	1 198	1 238	1 276	1 311	1 346
Machinery	741	742	739	734	729	725	726	730	736	743
Transport equipment	478	485	491	494	497	503	512	523	533	545
Other manufactures	1 389	1 395	1 407	1 419	1 430	1 440	1 451	1 462	1 476	1 483
Other non-rural (incl. sugar and beverages)	1 028	1 052	1 063	1 056	1 034	1 003	971	943	923	911
<i>Other goods</i>	1 205	1 246	1 259	1 252	1 245	1 262	1 304	1 366	1 434	1 502
Goods for processing	24	26	26	25	24	26	28	31	34	36
Repairs on goods	8	8	8	9	10	10	10	10	9	9
Goods procured in ports by carriers	132	136	138	138	138	139	142	144	146	148
Non-monetary gold	1 042	1 077	1 088	1 080	1 072	1 087	1 124	1 182	1 245	1 309

(a) For all time periods, estimates for sugar, sugar preparations and honey are included in Other non-rural.

(b) A trend break of \$725m has been applied to metal ores and minerals, and related aggregates in April 2008. This trend break will be reassessed when sufficient observations post April 2008 are available. Recent months should be used with caution.

(c) A trend break of \$2,000m has been applied to coal, coke and briquettes, and related aggregates in April 2008. This trend break will be reassessed when sufficient observations post April 2008 are available. Recent months should be used with caution.

GOODS DEBITS(a): Trend Estimates

	Dec 2007	Jan 2008	Feb 2008	Mar 2008	Apr 2008	May 2008	Jun 2008	Jul 2008	Aug 2008	Sep 2008
	\$m	\$m	\$m	\$m	\$m	\$m	\$m	\$m	\$m	\$m
Total goods debits	-16 881	-17 192	-17 502	-17 785	-18 044	-18 327	-18 651	-19 009	-19 367	-19 687
<i>Consumption goods</i>	-4 982	-5 042	-5 084	-5 101	-5 093	-5 076	-5 062	-5 054	-5 049	-5 044
Food and beverages, mainly for consumption	-638	-646	-659	-671	-679	-684	-690	-697	-704	-712
Household electrical items	-411	-408	-406	-404	-402	-400	-398	-395	-393	-392
Non-industrial transport equipment	-1 462	-1 491	-1 503	-1 499	-1 480	-1 453	-1 426	-1 402	-1 381	-1 358
Textiles, clothing and footwear	-585	-588	-591	-594	-596	-599	-604	-608	-611	-615
Toys, books and leisure goods	-388	-392	-395	-398	-400	-403	-406	-408	-410	-411
Consumption goods n.e.s.	-1 498	-1 517	-1 530	-1 536	-1 536	-1 536	-1 538	-1 543	-1 549	-1 556
<i>Capital goods</i>	-3 789	-3 858	-3 909	-3 939	-3 955	-3 982	-4 037	-4 116	-4 204	-4 291
Machinery and industrial equipment	-1 348	-1 381	-1 415	-1 446	-1 465	-1 473	-1 480	-1 489	-1 500	-1 502
ADP equipment	-619	-615	-603	-585	-566	-555	-553	-554	-559	-565
Telecommunications equipment	-496	-483	-470	-460	-459	-464	-472	-485	-501	-518
Civil aircraft(b)	-197	-245	-284	-305	-308	-307	-318	-341	-368	-405
Industrial transport equipment n.e.s.	-641	-643	-642	-646	-660	-687	-722	-757	-790	-816
Capital goods n.e.s.	-486	-491	-495	-497	-497	-495	-492	-489	-486	-483
<i>Intermediate and other merchandise goods</i>	-7 381	-7 527	-7 700	-7 888	-8 089	-8 308	-8 535	-8 764	-8 981	-9 166
Food and beverages, mainly for industry	-78	-78	-78	-77	-78	-79	-82	-86	-90	-95
Primary industrial supplies n.e.s.	-124	-120	-117	-118	-124	-133	-144	-153	-160	-165
Fuels and lubricants	-2 401	-2 499	-2 614	-2 744	-2 867	-2 972	-3 052	-3 110	-3 150	-3 164
Parts for transport equipment	-728	-737	-745	-753	-760	-768	-778	-789	-800	-811
Parts for ADP equipment	-93	-92	-90	-88	-87	-86	-85	-85	-85	-84
Other parts for capital goods	-975	-983	-995	-1 007	-1 018	-1 029	-1 040	-1 053	-1 067	-1 086
Organic and inorganic chemicals	-373	-368	-371	-378	-392	-408	-427	-447	-465	-480
Paper and paperboard	-188	-189	-192	-196	-199	-203	-206	-209	-212	-214
Textile yarn and fabrics	-114	-114	-113	-111	-109	-108	-107	-108	-109	-110
Iron and steel	-279	-283	-292	-305	-328	-360	-400	-444	-489	-528
Plastics	-250	-248	-249	-253	-258	-263	-268	-271	-274	-276
Processed industrial supplies n.e.s.	-1 646	-1 677	-1 706	-1 731	-1 757	-1 788	-1 822	-1 857	-1 891	-1 918
Other merchandise goods(b)	-132	-139	-137	-126	-114	-111	-125	-153	-190	-234
<i>Other goods</i>	-729	-764	-809	-857	-907	-962	-1 016	-1 075	-1 133	-1 186
Goods for processing	-9	-12	-20	-33	-48	-59	-62	-59	-50	-41
Repairs on goods	-7	-7	-7	-8	-9	-10	-11	-12	-13	-13
Goods procured in ports by carriers	-139	-145	-152	-162	-173	-185	-196	-205	-213	-218
Non-monetary gold	-574	-601	-631	-655	-677	-708	-747	-799	-857	-913

(a) For sign conventions, see paragraph 11 of the Explanatory Notes.

(b) From September 2008, commodities subject to a 'no commodity details' or 'no value details' restriction are included in Civil aircraft. For earlier periods, they are included in Other merchandise goods.

SERVICES (a)(b), Summary—Original

							3 MONTHS ENDED SEPTEMBER		
	2005-06	2006-07	2007-08	July 2008	August 2008	September 2008	2007	2008	Change
	\$m	\$m	\$m	\$m	\$m	\$m	\$m	\$m	%
Services credits	41 849	46 181	51 319	4 798	4 750	4 641	12 214	14 189	16.2
Transportation services	8 208	8 617	9 394	858	825	825	2 167	2 508	15.7
Passenger(c)	4 104	4 237	4 100	349	316	314	1 002	979	-2.3
Freight	608	609	631	49	49	49	154	147	-4.5
Other	3 496	3 771	4 663	460	460	462	1 011	1 382	36.7
Travel services	22 624	25 161	28 430	2 705	2 689	2 581	6 842	7 975	16.6
Other services	11 017	12 403	13 495	1 235	1 236	1 235	3 205	3 706	15.6
Services debits	-41 078	-44 428	-49 963	-4 643	-4 533	-5 088	-12 316	-14 264	-15.8
Transportation services	-14 508	-15 360	-16 382	-1 530	-1 522	-1 750	-3 959	-4 802	-21.3
Passenger(c)	-6 284	-6 876	-7 289	-704	-698	-803	-1 841	-2 205	-19.8
Freight	-7 776	-8 036	-8 600	-786	-784	-907	-2 004	-2 477	-23.6
Other	-448	-448	-493	-40	-40	-40	-114	-120	-5.3
Travel services	-15 090	-15 934	-18 030	-1 646	-1 536	-1 852	-4 668	-5 034	-7.8
Other services	-11 480	-13 134	-15 551	-1 467	-1 475	-1 486	-3 689	-4 428	-20.0
Memorandum items:									
Tourism related service credits(d)	26 728	29 398	32 530	3 054	3 005	2 895	7 844	8 954	14.2
Tourism related service debits(d)	-21 374	-22 810	-25 319	-2 350	-2 234	-2 655	-6 509	-7 239	-11.2

(a) For sign conventions, see paragraph 11 of the Explanatory Notes.

(b) For more detailed trade in services components, see table 11.

(c) Passenger services includes agency fees and commission receipts for air transport.

(d) For a more detailed explanation of tourism related services, see paragraphs 18 and 19 of the Explanatory Notes.

SERVICES(a), Summary: Seasonally Adjusted and Trend Estimates

	Dec 2007	Jan 2008	Feb 2008	Mar 2008	Apr 2008	May 2008	Jun 2008	Jul 2008	Aug 2008	Sep 2008
	\$m	\$m	\$m	\$m	\$m	\$m	\$m	\$m	\$m	\$m

SEASONALLY ADJUSTED

Services credits	4 141	4 284	4 352	4 403	4 471	4 606	4 648	4 716	4 634	4 786
Transportation services	715	832	839	839	860	854	852	842	824	851
Passenger(b)	340	342	346	344	349	340	337	339	320	343
Freight(c)	53	51	51	51	53	53	55	50	50	49
Other(c)	322	439	441	445	458	461	460	452	454	459
Travel services	2 320	2 338	2 391	2 440	2 415	2 551	2 587	2 639	2 564	2 681
Other services(c)	1 106	1 114	1 123	1 125	1 196	1 201	1 209	1 235	1 246	1 254
Services debits	-4 082	-4 178	-4 170	-4 238	-4 366	-4 456	-4 481	-4 506	-4 605	-4 685
Transportation services	-1 342	-1 390	-1 367	-1 404	-1 414	-1 463	-1 494	-1 526	-1 545	-1 581
Passenger(b)	-591	-595	-605	-618	-635	-655	-691	-681	-691	-692
Freight	-713	-755	-722	-745	-734	-763	-755	-805	-814	-849
Other(d)	-38	-40	-40	-41	-45	-45	-48	-40	-40	-40
Travel services	-1 504	-1 527	-1 525	-1 553	-1 511	-1 540	-1 545	-1 510	-1 574	-1 605
Other services(c)	-1 235	-1 260	-1 278	-1 281	-1 440	-1 453	-1 443	-1 471	-1 485	-1 499
Memorandum items:										
Tourism related service credits(e)	2 660	2 680	2 737	2 783	2 764	2 891	2 924	2 979	2 884	3 024
Tourism related service debits(e)	-2 095	-2 122	-2 130	-2 171	-2 146	-2 195	-2 236	-2 191	-2 265	-2 297

TREND ESTIMATES

Services credits	4 146	4 299	4 353	4 421	4 494	4 564	4 625	4 676	4 718	4 750
Transportation services	715	833	839	845	849	849	847	845	842	840
Passenger(b)	339	341	344	345	344	341	338	336	334	333
Freight	53	52	52	52	52	52	52	51	51	50
Other(f)	323	440	443	448	453	455	457	457	457	457
Travel services	2 329	2 352	2 385	2 426	2 473	2 520	2 563	2 600	2 631	2 655
Other services	1 103	1 114	1 130	1 149	1 172	1 194	1 214	1 231	1 245	1 256
Services debits	-4 093	-4 141	-4 202	-4 271	-4 343	-4 414	-4 481	-4 544	-4 601	-4 645
Transportation services	-1 347	-1 362	-1 381	-1 403	-1 430	-1 459	-1 490	-1 520	-1 547	-1 569
Passenger(b)	-591	-597	-607	-622	-639	-656	-671	-683	-692	-698
Freight	-717	-726	-733	-739	-747	-759	-775	-794	-814	-830
Other	-39	-40	-41	-43	-44	-44	-44	-43	-42	-41
Travel services	-1 507	-1 520	-1 528	-1 531	-1 532	-1 534	-1 539	-1 549	-1 561	-1 573
Other services	-1 240	-1 259	-1 293	-1 337	-1 382	-1 421	-1 452	-1 475	-1 492	-1 504
Memorandum items:										
Tourism related service credits(e)	2 668	2 693	2 729	2 771	2 817	2 862	2 901	2 936	2 965	2 987
Tourism related service debits(e)	-2 097	-2 116	-2 135	-2 153	-2 171	-2 190	-2 211	-2 232	-2 253	-2 271

- (a) For sign conventions, see paragraph 11 of the Explanatory Notes.
- (b) Passenger services includes agency fees and commission receipts for air transport.
- (c) In using these seasonally adjusted series, care should be exercised because of the difficulties associated with reliably estimating the seasonal pattern.

- (d) This component is not seasonally adjusted.
- (e) For a more detailed explanation of tourism related services, see paragraphs 18 and 19 of the Explanatory Notes.
- (f) A trend break has been applied to Other transportation credits and related aggregates in January 2008.

	CREDITS				DEBITS			
	Dec Qtr	Mar Qtr	Jun Qtr	Sep Qtr	Dec Qtr	Mar Qtr	Jun Qtr	Sep Qtr
	2007	2008	2008	2008	2007	2008	2008	2008
	\$m	\$m	\$m	\$m	\$m	\$m	\$m	\$m
Services	12 544	13 270	13 291	14 189	-12 392	-12 222	-13 033	-14 264
Transportation services	2 193	2 583	2 451	2 508	-4 138	-3 988	-4 297	-4 802
Passenger(c)	1 056	1 152	890	979	-1 762	-1 681	-2 005	-2 205
Freight	168	144	165	147	-2 256	-2 186	-2 154	-2 477
Other	969	1 287	1 396	1 382	-120	-121	-138	-120
Travel services	6 935	7 466	7 187	7 975	-4 451	-4 475	-4 436	-5 034
Business	644	705	687	730	-688	-910	-653	-660
Personal	6 291	6 761	6 500	7 245	-3 763	-3 565	-3 783	-4 374
Education-related	3 008	3 441	3 877	4 436	-176	-209	-201	-323
Other	3 283	3 320	2 623	2 809	-3 587	-3 356	-3 582	-4 051
Communication services(d)	167	173	216	345	-218	-247	-244	-309
Construction services	41	36	8	6	—	—	—	—
Insurance services	181	181	181	186	-233	-233	-233	-243
Financial services	259	259	259	270	-155	-155	-155	-162
Computer and information services	407	332	423	444	-412	-307	-382	-390
Royalties and license fees	177	180	211	186	-865	-907	-888	-948
Other business services	1 817	1 627	1 943	1 854	-1 460	-1 314	-1 876	-1 863
Merchanting and other trade-related	253	214	320	273	-68	-54	-53	-63
Operational leasing	20	19	23	33	-208	-188	-218	-225
Miscellaneous business, professional and technical	1 544	1 394	1 600	1 548	-1 184	-1 072	-1 605	-1 575
Legal, accounting, management consulting and public relations	288	277	286	330	-108	-130	-162	-219
Advertising, market research and public opinion polling	87	74	70	81	-51	-40	-66	81
Research and development	158	118	129	135	-35	-35	-38	-39
Architectural, engineering and other technical services	398	430	492	459	-387	-266	-442	-720
Agriculture, mining and on-site processing	103	84	100	9	-115	-172	-387	-300
Services between affiliated enterprises n.i.e.	339	258	327	315	-236	-230	-257	-249
Other	171	153	196	219	-252	-199	-253	-129
Personal, cultural, and recreational services	166	217	195	201	-247	-393	-282	-321
Audiovisual and related services	40	89	52	57	-206	-310	-250	-282
Personal, cultural and recreational services	126	128	143	144	-41	-83	-32	-39
Government services n.i.e.	201	216	217	214	-213	-203	-240	-192
Memorandum items:								
Tourism related services(e)	7 991	8 618	8 077	8 954	-6 213	-6 156	-6 441	-7 239

— nil or rounded to zero (including null cells)

(a) For sign conventions, see paragraph 11 of the Explanatory Notes.

(b) For more information see paragraphs 15 and 16 of the Explanatory Notes.

(c) Passenger services includes agency fees and commission receipts for air transport.

(d) Communications services includes other services n.i.e.

(e) For a more detailed explanation of tourism related services, see paragraphs 18 and 19 of the Explanatory Notes.

					3 MONTHS ENDED SEPTEMBER	
					2007	2008
					
	July 2008	August 2008	September 2008	Per cent of total merchandise exports(b)		
	\$m	\$m	\$m	%	\$m	\$m
MAJOR COMMODITIES (c)						
011 Meat of bovine animals	439	417	456	2.1	1 094	1 312
041 Wheat and meslin	301	378	218	1.0	546	898
268 Wool and other animal hair	176	109	179	0.8	500	464
281 Iron ore and concentrates	2 899	3 012	3 443	15.9	4 143	9 354
283 Copper ores and concentrates	303	394	464	2.1	1 139	1 161
285 Aluminium ores and concentrates	524	543	528	2.4	1 564	1 595
321 Coal, not agglomerated	3 875	4 655	5 111	23.6	5 064	13 641
333 Crude petroleum oils	1 085	995	1 124	5.2	2 059	3 204
334 Refined petroleum oils	200	309	255	1.2	844	764
343 Natural gas	685	757	583	2.7	1 173	2 025
682 Copper	312	324	340	1.6	703	976
684 Aluminium	451	495	641	3.0	1 533	1 588
781 Motor vehicles for transport of people	305	371	333	1.5	798	1 009
971 Gold, non-monetary	1 422	1 261	1 281	5.9	2 905	3 965

SECTION AND DIVISION OF THE SITC

0	Food and live animals					
00	Live animals other than fish, crustaceans, molluscs and aquatic invertebrates	87	112	93	0.4	231 292
01	Meat and meat preparations	576	575	649	3.0	1 602 1 800
02	Dairy products and birds' eggs	137	173	235	1.1	564 545
03	Fish (not marine mammals), crustaceans, molluscs and aquatic invertebrates, and preparations thereof	62	168	72	0.3	322 302
04	Cereals and cereal preparations	489	511	375	1.7	899 1 375
05	Vegetables and fruit	121	122	105	0.5	348 347
06	Sugars, sugar preparations and honey	17	30	25	0.1	70 72
07	Coffee, tea, cocoa, spices, and manufactures thereof	19	23	26	0.1	71 68
08	Feeding stuff for animals (excl. unmilled cereals)	90	91	92	0.4	173 273
09	Miscellaneous edible products and preparations	50	49	53	0.2	115 153
	<i>Total Food and live animals</i>	<i>1 647</i>	<i>1 854</i>	<i>1 725</i>	<i>8.0</i>	<i>4 398 5 226</i>
1	Beverages and tobacco					
11	Beverages	224	248	253	1.2	849 725
12	Tobacco and tobacco manufactures	8	11	10	—	39 29
	<i>Total Beverages and tobacco</i>	<i>232</i>	<i>259</i>	<i>263</i>	<i>1.2</i>	<i>888 754</i>
2	Crude materials, inedible, except fuels					
21	Hides, skins and furskins, raw	55	60	64	0.3	169 178
22	Oil-seeds and oleaginous fruits	22	9	7	—	41 38
23	Crude rubber (incl. synthetic and reclaimed)	1	1	1	—	2 2
24	Cork and wood	103	141	129	0.6	304 373
25	Pulp and waste paper	24	27	26	0.1	55 77
26	Textile fibres and their wastes (not manufactured into yarn or fabric)	236	156	229	1.1	677 621
27	Crude fertilizers (excl. those of Division 56) and crude minerals (excl. coal, petroleum and precious stones)	27	23	41	0.2	131 91
28	Metalliferous ores and metal scrap	4 411	4 775	5 541	25.6	9 242 14 727
29	Crude animal and vegetable materials, n.e.s.	25	20	23	0.1	52 68
	<i>Total Crude materials, inedible, except fuels</i>	<i>4 905</i>	<i>5 211</i>	<i>6 060</i>	<i>28.0</i>	<i>10 672 16 176</i>

— nil or rounded to zero (including null cells)

(a) Some SITC sections and divisions exclude commodities subject to a confidentiality restriction. These are included in Division 98. For more information see paragraph 17 of the Explanatory Notes.

(b) Per cent of total merchandise is calculated for the most recent month.

(c) The 'Major commodities' section lists commodities at the SITC Rev 4 3-digit level which are the most significant (by value) or are of particular interest. Abbreviated descriptors have been used. The list of 'Major commodities' is reviewed annually.

						3 MONTHS ENDED SEPTEMBER	
						2007	2008
						\$m	\$m
						%	
						\$m	\$m
SECTION AND DIVISION OF THE SITC							
3	Mineral fuels, lubricants and related materials						
32	Coal, coke and briquettes	3 897	4 664	5 130	23.7	5 105	13 692
33	Petroleum, petroleum products and related materials	1 287	1 308	1 381	6.4	2 907	3 975
34	Gas, natural and manufactured	793	843	725	3.4	1 478	2 361
	<i>Total Mineral fuels, lubricants and related materials</i>	<i>5 977</i>	<i>6 814</i>	<i>7 236</i>	<i>33.5</i>	<i>9 491</i>	<i>20 027</i>
4	Animal and vegetable oils, fats and waxes						
41	Animal oils and fats	31	25	49	0.2	79	105
42	Fixed vegetable fats and oils, crude, refined or fractionated	18	14	12	0.1	22	44
43	Fats and oils (processed), waxes and inedible mixtures or preparations, of animal or vegetable origin, n.e.s.	1	1	1	—	3	3
	<i>Total Animal and vegetable oils, fats and waxes</i>	<i>50</i>	<i>41</i>	<i>61</i>	<i>0.3</i>	<i>104</i>	<i>152</i>
5	Chemicals and related products, nes						
51	Organic chemicals	14	18	17	0.1	39	48
52	Inorganic chemicals	36	40	54	0.3	209	130
53	Dyeing, tanning and colouring materials	34	44	54	0.2	158	133
54	Medicinal and pharmaceutical products	381	333	305	1.4	1 083	1 019
55	Essential oils and resinoids and perfume materials; toilet, polishing and cleansing preparations	50	46	56	0.3	139	152
56	Fertilisers (excl. crude)	91	171	156	0.7	131	418
57	Plastics in primary forms	26	31	27	0.1	95	83
58	Plastics in non-primary forms	29	31	28	0.1	92	89
59	Chemical materials and products, n.e.s.	85	80	103	0.5	214	268
	<i>Total Chemicals and related products, n.e.s.</i>	<i>746</i>	<i>794</i>	<i>800</i>	<i>3.7</i>	<i>2 160</i>	<i>2 339</i>
6	Manufactured goods classified chiefly by material						
61	Leather, leather manufactures, and dressed furskins, n.e.s.	24	28	27	0.1	97	78
62	Rubber manufactures, n.e.s.	22	21	26	0.1	68	69
63	Cork and wood manufactures (excl. furniture)	14	14	14	0.1	38	42
64	Paper, paperboard, and articles of paper pulp, of paper or of paperboard	49	58	63	0.3	172	170
65	Textile yarn, fabrics, made-up articles n.e.s., and related products	33	31	32	0.1	113	96
66	Non-metallic mineral manufactures, n.e.s.	46	58	96	0.4	216	199
67	Iron and steel	205	142	173	0.8	261	520
68	Non-ferrous metals	998	1 202	1 219	5.6	3 383	3 418
69	Manufactures of metals, n.e.s.	99	93	94	0.4	281	286
	<i>Total Manufactured goods classified chiefly by material</i>	<i>1 489</i>	<i>1 646</i>	<i>1 744</i>	<i>8.1</i>	<i>4 629</i>	<i>4 879</i>
7	Machinery and transport equipment						
71	Power generating machinery and equipment	91	91	90	0.4	311	272
72	Machinery specialized for particular industries	144	181	167	0.8	471	492
73	Metal working machinery	14	16	18	0.1	54	49
74	General industrial machinery and equipment, n.e.s. and machine parts, n.e.s.	156	162	163	0.8	459	482
75	Office machines and automatic data processing machines	101	97	107	0.5	289	305
76	Telecommunications and sound recording and reproducing apparatus and equipment	74	111	75	0.3	225	261
77	Electrical machinery, apparatus and appliances, parts (incl. non-electrical counterparts of electrical domestic equip)	152	158	160	0.7	484	470
78	Road vehicles (incl. air-cushion vehicles)	414	457	438	2.0	1 134	1 309
79	Transport equipment (excl. road vehicles)	123	106	109	0.5	257	337
	<i>Total Machinery and transport equipment</i>	<i>1 270</i>	<i>1 379</i>	<i>1 328</i>	<i>6.1</i>	<i>3 684</i>	<i>3 977</i>

— nil or rounded to zero (including null cells)

(b) Per cent of total merchandise is calculated for the most recent month.

(a) Some SITC sections and divisions exclude commodities subject to a confidentiality restriction. These are included in Division 98. For more information see paragraph 17 of the Explanatory Notes.

					3 MONTHS ENDED SEPTEMBER	
		July 2008	August 2008	September 2008	Per cent of total merchandise exports(b)	2007 2008
		\$m	\$m	\$m	%	\$m \$m
SECTION AND DIVISION OF THE SITC						
8	Miscellaneous manufactured articles					
81	Prefabricated buildings and sanitary, plumbing, heating and lighting fixtures and fittings, n.e.s.	11	20	9	—	44 40
82	Furniture, parts thereof; bedding, mattresses, mattress supports, cushions and similar stuffed furnishings	9	10	12	0.1	28 31
83	Travel goods, handbags and similar containers	3	2	3	—	7 7
84	Articles of apparel and clothing accessories	23	25	22	0.1	68 69
85	Footwear	4	5	5	—	13 13
87	Professional, scientific and controlling instruments and apparatus, n.e.s.	169	161	175	0.8	468 505
88	Photographic apparatus, equipment and supplies and optical goods, n.e.s.; watches and clocks	25	28	33	0.2	82 86
89	Miscellaneous manufactured articles, n.e.s.	198	184	207	1.0	628 590
	Total Miscellaneous manufactured articles	441	435	466	2.2	1 338 1 343
9	Commodities and transactions not classified elsewhere in the SITC					
93	Special transactions and commodities not classified according to kind	103	119	120	0.6	311 343
95	Gold coin whether or not legal tender, and other coin being legal tender	13	18	35	0.2	37 67
96	Coin (excl. gold coin), not being legal tender	—	—	—	—	— —
97	Gold, non-monetary (excl. gold ores and concentrates)	1 422	1 261	1 281	5.9	2 905 3 965
98	Combined confidential items excl. some of SITC 280 (exports only) and some of SITCs 510 and 520 (imports only)	351	483	507	2.3	2 172 1 341
	Total Commodities and transactions not classified elsewhere in the SITC	1 890	1 882	1 944	9.0	5 425 5 716
	Total merchandise exports	18 646	20 315	21 628	100.0	42 788 60 589
	Balance of Payments Adjustments	144	142	139	. .	240 425
	Goods credits (exports) on a Balance of Payments Basis	18 790	20 457	21 767	. .	43 028 61 014

.. not applicable
— nil or rounded to zero (including null cells)

- (a) Some SITC sections and divisions exclude commodities subject to a confidentiality restriction. These are included in Division 98. For more information see paragraph 17 of the Explanatory Notes.
- (b) Per cent of total merchandise is calculated for the most recent month.

	July 2008	August 2008	September 2008	Per cent of total merchandise imports(b)	3 MONTHS ENDED SEPTEMBER	
	\$m	\$m	\$m	%	2007	2008

MAJOR COMMODITIES(c)

333 Crude petroleum oils	2 032	1 697	1 778	8.5	3 771	5 507
334 Refined petroleum oils	1 490	937	1 346	6.4	1 942	3 772
542 Medicaments	626	570	550	2.6	1 633	1 746
641 Paper and paperboard	193	181	214	1.0	554	588
723 Civil engineering and contractors' plant and equipment	350	357	325	1.6	890	1 031
751 Office machines	174	144	191	0.9	499	509
752 Automatic data processing machines	447	444	458	2.2	1 382	1 349
761 Televisions	327	226	249	1.2	838	802
764 Telecommunications equipment	538	494	696	3.3	1 676	1 728
781 Motor vehicles for the transport of people	1 276	1 257	1 145	5.5	3 345	3 678
782 Motor vehicles for the transport of goods	595	552	605	2.9	1 339	1 752
784 Parts and accessories of motor vehicles	245	234	227	1.1	651	706
971 Gold, non-monetary	909	747	1 008	4.8	1 885	2 663

SECTION AND DIVISION OF THE SITC

0 Food and live animals						
00 Live animals other than fish, crustaceans, molluscs and aquatic invertebrates	8	10	6	—	14	25
01 Meat and meat preparations	46	33	39	0.2	89	118
02 Dairy products and birds' eggs	49	45	49	0.2	107	144
03 Fish (not marine mammals), crustaceans, molluscs and aquatic invertebrates, and preparations thereof	98	89	100	0.5	295	287
04 Cereals and cereal preparations	67	74	75	0.4	169	216
05 Vegetables and fruit	125	125	138	0.7	349	387
06 Sugars, sugar preparations and honey	19	19	23	0.1	61	61
07 Coffee, tea, cocoa, spices, and manufactures thereof	85	98	107	0.5	264	290
08 Feeding stuff for animals (excl. unmilled cereals)	51	40	62	0.3	122	153
09 Miscellaneous edible products and preparations	118	101	147	0.7	357	366
<i>Total Food and live animals</i>	667	634	747	3.6	1 826	2 048
1 Beverages and tobacco						
11 Beverages	95	108	167	0.8	322	370
12 Tobacco and tobacco manufactures	21	15	11	0.1	51	47
<i>Total Beverages and tobacco</i>	116	123	179	0.9	373	418
2 Crude materials, inedible, except fuels						
21 Hides, skins and furskins, raw	—	—	—	—	1	1
22 Oil seeds and oleaginous fruits	5	5	5	—	16	15
23 Crude rubber (incl. synthetic and reclaimed)	18	22	22	0.1	40	62
24 Cork and wood	53	47	56	0.3	153	156
25 Pulp and waste paper	27	33	40	0.2	79	100
26 Textile fibres and their wastes (not manufactured into yarn or fabric)	12	13	12	0.1	36	37
27 Crude fertilisers (excl. those of Division 56) and crude minerals (excl. coal, petroleum and precious stones)	69	56	56	0.3	52	181
28 Metalliferous ores and metal scrap	73	71	22	0.1	170	165
29 Crude animal and vegetable materials, n.e.s.	21	20	32	0.2	63	72
<i>Total Crude materials, inedible, except fuels</i>	277	268	245	1.2	610	790
3 Mineral fuels, lubricants and related materials						
32 Coal, coke and briquettes	3	1	1	—	4	5
33 Petroleum, petroleum products and related materials	3 574	2 688	3 193	15.2	5 818	9 454
34 Gas, natural and manufactured	148	107	163	0.8	302	418
<i>Total Mineral fuels, lubricants and related materials</i>	3 725	2 795	3 357	16.0	6 124	9 876

— nil or rounded to zero (including null cells)

(a) Some SITC sections and divisions exclude commodities subject to a confidentiality restriction. These are included in Division 98. For more information see paragraph 17 of the Explanatory Notes.

(b) Per cent of total merchandise is calculated for the most recent month.

(c) The 'Major commodities' section lists commodities at the SITC Rev 4 3-digit level which are the most significant (by value) or are of particular interest. Abbreviated descriptors have been used. The list of 'Major commodities' is reviewed annually.

					3 MONTHS ENDED SEPTEMBER	
					2007	2008
					
	July 2008	August 2008	September 2008	Per cent of total merchandise imports(b)		
	\$m	\$m	\$m	%	\$m	\$m
SECTION AND DIVISION OF THE SITC						
4	Animal and vegetable oils, fats and waxes					
41	Animal oils and fats	3	2	2	—	5 7
42	Fixed vegetable fats and oils, crude, refined or fractionated	38	49	62	0.3	116 149
43	Fats and oils (processed), waxes and inedible mixtures or preparations, of animal or vegetable origin, n.e.s.	6	5	6	—	13 17
	<i>Total Animal and vegetable oils, fats and waxes</i>	47	57	70	0.3	135 173
5	Chemicals and related products, n.e.s.					
51	Organic chemicals	278	284	286	1.4	931 848
52	Inorganic chemicals	152	208	189	0.9	264 549
53	Dyeing, tanning and colouring materials	55	59	61	0.3	155 175
54	Medicinal and pharmaceutical products	755	686	698	3.3	1 987 2 139
55	Essential oils and resinoids and perfume materials; toilet, polishing and cleansing preparations	132	135	173	0.8	430 440
56	Fertilisers (excl. crude)	155	181	202	1.0	176 537
57	Plastics in primary forms	155	146	169	0.8	441 469
58	Plastics in non-primary forms	112	117	131	0.6	322 360
59	Chemical materials and products, n.e.s.	170	166	198	0.9	442 534
	<i>Total Chemicals and related products, n.e.s.</i>	1 964	1 981	2 108	10.0	5 148 6 052
6	Manufactured goods classified chiefly by material					
61	Leather, leather manufactures, and dressed furskins, n.e.s.	21	14	16	0.1	43 51
62	Rubber manufactures, n.e.s.	224	209	242	1.2	612 676
63	Cork and wood manufactures (excl. furniture)	55	53	65	0.3	153 174
64	Paper, paperboard, and articles of paper pulp, of paper or of paperboard	258	241	288	1.4	743 787
65	Textile yarn, fabrics, made-up articles, n.e.s., and related products	201	211	236	1.1	637 649
66	Non-metallic mineral manufactures, n.e.s.	216	217	276	1.3	594 709
67	Iron and steel	430	489	596	2.8	912 1 514
68	Non-ferrous metals	172	148	148	0.7	378 469
69	Manufactures of metals, n.e.s.	451	468	514	2.5	1 227 1 434
	<i>Total Manufactured goods classified chiefly by material</i>	2 028	2 050	2 383	11.4	5 299 6 461
7	Machinery and transport equipment					
71	Power generating machinery and equipment	429	475	475	2.3	1 113 1 379
72	Machinery specialised for particular industries	701	730	769	3.7	1 948 2 199
73	Metal working machinery	68	59	60	0.3	193 187
74	General industrial machinery and equipment, n.e.s. and machine parts, n.e.s.	864	904	952	4.5	2 404 2 720
75	Office machines and automatic data processing machines	714	682	747	3.6	2 217 2 143
76	Telecommunications and sound recording and reproducing apparatus and equipment	958	794	1 071	5.1	2 795 2 824
77	Electrical machinery, apparatus, appliances, parts (incl. non-elec. counterparts of electrical domestic equip)	837	812	895	4.3	2 299 2 543
78	Road vehicles (incl. air-cushion vehicles)	2 324	2 242	2 245	10.7	5 873 6 811
79	Transport equipment (excl. road vehicles)	658	732	263	1.3	941 1 653
	<i>Total Machinery and transport equipment</i>	7 553	7 430	7 478	35.7	19 783 22 461

— nil or rounded to zero (including null cells)

(b) Per cent of total merchandise is calculated for the most recent month.

(a) Some SITC sections and divisions exclude commodities subject to a confidentiality restriction. These are included in Division 98. For more information see paragraph 17 of the Explanatory Notes.

					3 MONTHS ENDED SEPTEMBER	
					
	July 2008	August 2008	September 2008	Per cent of total merchandise imports(b)	2007	2008
	\$m	\$m	\$m	%	\$m	\$m
SECTION AND DIVISION OF THE SITC						
8	Miscellaneous manufactured articles					
81	Prefabricated buildings; sanitary, plumbing, heating and lighting fixtures and fittings, n.e.s.					
	59	73	84	0.4	178	217
82	Furniture, parts thereof; bedding, mattresses, mattress supports, cushions and similar stuffed furnishings					
	216	227	258	1.2	651	701
83	Travel goods, handbags and similar containers					
	62	60	74	0.4	180	196
84	Articles of apparel and clothing accessories					
	418	430	460	2.2	1 210	1 308
85	Footwear					
	121	119	115	0.5	332	355
87	Professional, scientific and controlling instruments and apparatus, n.e.s.					
	404	396	424	2.0	1 062	1 224
88	Photographic apparatus, equipment and supplies and optical goods, n.e.s.; watches and clocks					
	123	110	132	0.6	345	365
89	Miscellaneous manufactured articles, n.e.s.					
	863	851	1 357	6.5	2 422	3 071
	<i>Total Miscellaneous manufactured articles</i>	<i>2 266</i>	<i>2 267</i>	<i>13.8</i>	<i>6 380</i>	<i>7 437</i>
9	Commodities and transactions not classified elsewhere in the SITC					
93	Special transactions and commodities not classified according to kind					
	4	4	4	—	9	12
95	Gold coin whether or not legal tender, and other coin being legal tender					
	—	1	1	—	1	1
96	Coin (excl. gold coin), not being legal tender					
	—	—	—	—	—	—
97	Gold, non-monetary (excl. gold ores and concentrates)					
	909	747	1 008	4.8	1 885	2 663
98	Combined confidential items excl some of SITC 280 (exports only) and some of SITCs 510 and 520 (imports only)					
	53	61	493	2.3	114	607
	<i>Total Commodities and transactions not classified elsewhere in the SITC</i>	<i>966</i>	<i>812</i>	<i>7.2</i>	<i>2 009</i>	<i>3 283</i>
Total merchandise imports					47 686	59 000
Balance of Payments Adjustment					723	809
Goods Debits (imports) on a Balance of Payments Basis					48 409	59 809

.. not applicable

— nil or rounded to zero (including null cells)

(a) Some SITC sections and divisions exclude commodities subject to a confidentiality restriction. These are included in Division 98. For more information see paragraph 17 of the Explanatory Notes.

(b) Per cent of total merchandise is calculated for the most recent month.

	EXPORTS				IMPORTS(b)				BALANCE OF MERCHANDISE TRADE	
	2007-08	September 2008	3 Months Ended September 2007	3 Months Ended September 2008	2007-08	September 2008	3 Months Ended September 2007	3 Months Ended September 2008	2007-08	3 Months Ended September 2008
	\$m	\$m	\$m	\$m	\$m	\$m	\$m	\$m		
Belgium	1 341	138	379	511	1 728	152	381	505	-388	5
Brazil	936	149	232	559	1 041	90	246	406	-105	153
Canada	1 623	172	427	438	2 188	220	508	698	-565	-261
China	26 952	3 289	5 619	9 273	30 996	3 433	7 541	9 143	-4 044	130
Denmark	177	15	42	42	895	87	207	270	-718	-229
Egypt(c)	310	29	87	102	17	2	5	5	292	97
Fiji	380	37	95	104	122	14	32	40	258	64
Finland	1 146	108	306	233	945	101	222	294	201	-62
France	1 500	245	473	512	4 989	354	1 238	1 507	-3 488	-995
Germany	1 450	180	366	492	10 575	1 028	2 550	3 043	-9 125	-2 552
Hong Kong (Sar of China)	2 838	239	672	727	1 380	140	390	389	1 458	338
India	9 329	1 752	2 325	4 490	1 606	188	421	497	7 723	3 992
Indonesia	3 972	341	989	1 170	4 538	429	1 213	1 413	-565	-243
Iran	164	9	37	50	54	25	8	47	110	3
Iraq	94	—	4	60	23	—	—	—	71	60
Ireland	241	13	55	40	2 006	210	513	553	-1 764	-513
Israel	254	63	37	84	685	68	140	201	-431	-117
Italy	1 456	186	362	487	4 895	433	1 231	1 435	-3 439	-949
Japan	34 942	4 692	8 051	13 641	19 684	1 648	4 170	4 921	15 258	8 720
Korea, Republic of	14 252	2 044	3 417	4 694	6 163	526	1 496	1 619	8 089	3 075
Kuwait	577	28	164	118	363	110	78	168	213	-51
Malaysia	3 425	411	794	1 118	8 142	775	1 987	2 443	-4 717	-1 325
Mexico	551	70	166	165	1 238	113	281	304	-687	-138
Netherlands	2 863	334	618	847	1 555	177	337	480	1 309	367
New Zealand	9 529	939	2 527	2 515	7 042	735	1 630	2 038	2 486	477
Pakistan	491	35	174	115	154	13	35	37	336	78
Papua New Guinea	1 616	94	471	377	2 747	283	713	748	-1 131	-371
Philippines	1 280	140	324	389	763	75	191	209	517	180
Saudi Arabia	2 247	154	492	480	908	40	245	285	1 339	194
Singapore	5 224	541	962	1 507	13 687	1 398	2 439	3 894	-8 463	-2 388
South Africa	2 408	194	716	645	1 496	121	366	389	911	256
Spain	902	136	245	245	1 996	167	444	476	-1 094	-231
Sweden	445	95	115	296	2 461	279	556	703	-2 015	-407
Switzerland	944	17	663	54	2 129	221	530	624	-1 186	-569
Taiwan	6 463	767	1 525	2 223	4 127	422	1 107	1 124	2 336	1 099
Thailand	4 644	650	1 140	1 613	8 805	1 002	1 923	2 728	-4 161	-1 114
Turkey	655	72	168	310	404	52	95	124	251	185
United Arab Emirates	3 133	510	1 138	1 199	2 499	204	608	706	634	493
United Kingdom	8 309	594	1 608	2 389	8 499	1 065	2 770	2 582	-189	-193
United States of America	10 604	975	2 486	3 198	24 325	2 233	5 667	6 507	-13 721	-3 310
Viet Nam	1 814	95	267	259	5 132	569	1 054	1 622	-3 318	-1 362
Other Countries	9 309	1 078	2 049	2 822	9 222	1 770	2 118	3 819	87	-998
Total	180 789	21 628	42 788	60 589	202 225	20 975	47 686	59 000	-21 436	1 590
APEC	130 922	15 607	30 072	43 743	143 788	14 183	32 870	40 728	-12 866	3 015
ASEAN	20 484	2 189	4 517	6 090	42 191	4 314	9 105	12 781	-21 707	-6 691
Developing Countries	95 099	12 017	22 010	32 321	97 741	10 337	22 625	29 218	-2 642	3 103
Least Developed Countries	1 638	187	394	470	243	16	57	54	1 395	416
European Union(d)	20 483	2 112	4 697	6 298	43 227	4 377	11 102	12 690	-22 744	-6 392
OECD	93 513	11 081	22 582	31 245	107 372	10 376	25 752	29 875	-13 859	1 370

— nil or rounded to zero (including null cells)

(a) See Time series spreadsheets for details of all countries.

(b) From September 2008 imports data with confidentiality restrictions 'no commodity details' or 'no value details' are included in Other countries.

(c) Exports of Alumina to Egypt are excluded from country total and included in the 'Other Countries' category.

(d) The European Union includes 27 member countries.

			3 MONTHS ENDED SEPTEMBER	
	2007-08	September 2008	2007	2008
	\$m	\$m	\$m	\$m
.....				
EXPORTS (a)				
New South Wales	30 063	3 391	7 387	9 441
Victoria	20 539	2 001	5 156	5 424
Queensland	35 320	5 634	8 461	15 456
South Australia	10 340	871	2 637	2 798
Western Australia	68 795	8 030	15 385	22 722
Tasmania	3 640	319	899	932
Northern Territory	4 544	617	939	1 648
Australian Capital Territory	4	—	2	5
State not available for publication(b)	895	126	193	282
Re-exports	6 650	638	1 730	1 883
Total	180 789	21 628	42 788	60 589
.....				
IMPORTS				
New South Wales	75 908	7 147	18 449	20 531
Victoria	56 058	5 608	13 271	15 975
Queensland	32 357	3 694	7 335	10 073
South Australia	7 340	669	1 657	1 967
Western Australia	27 274	2 910	6 220	8 611
Tasmania	692	100	168	304
Northern Territory	2 581	353	583	1 046
Australian Capital Territory	14	—	3	1
State not available for publication(c)	—	493	—	493
Total	202 225	20 975	47 686	59 000

— nil or rounded to zero (including null cells)

(a) State in which the final stage of production or manufacture occurs.

(b) Exports of Alumina to Bahrain, Egypt and Iceland are excluded from the state totals and included in 'State not available for publication' category.

(c) From September 2008 data with confidentiality restrictions 'no commodity details' or 'no value details' are included in State not available for publication.

PERIOD AVERAGE EXCHANGE RATES(a): Per Australian dollar

<i>Period</i>	<i>United States dollar</i>	<i>UK pound sterling</i>	<i>Euro</i>	<i>Japanese yen</i>	<i>Trade-weighted index of value of the A\$(b)</i>
FINANCIAL YEAR					
2005-06	0.7474	0.4205	0.6143	85.90	63.3
2006-07	0.7863	0.4066	0.6018	93.21	64.8
2007-08	0.8968	0.4479	0.6099	98.63	69.7
MONTHS					
2007					
July	0.8675	0.4266	0.6325	105.47	69.7
August	0.8282	0.4123	0.6083	96.63	66.8
September	0.8464	0.4196	0.6088	97.34	67.7
October	0.8984	0.4397	0.6316	104.04	71.0
November	0.8987	0.4335	0.6121	99.88	70.0
December	0.8726	0.4314	0.5987	97.88	68.2
2008					
January	0.8815	0.4479	0.5993	95.16	68.2
February	0.9128	0.4647	0.6192	97.84	70.2
March	0.9260	0.4622	0.5964	93.36	69.8
April	0.9298	0.4695	0.5899	95.30	70.0
May	0.9491	0.4828	0.6098	98.90	72.2
June	0.9508	0.4840	0.6116	101.75	72.8
July	0.9625	0.4840	0.6102	102.71	73.3
August	0.8810	0.4668	0.5890	96.33	68.6
September	0.8205	0.4558	0.5700	87.49	64.9

- (a) These exchange rates and the trade-weighted index are derived using rates provided by the Reserve Bank of Australia in respect of each trading day.
- (b) May 1970 = 100. The Trade-weighted index is reweighted annually on 1 October and on special occasions as required.

EXPLANATORY NOTES

INTRODUCTION

1 This publication presents preliminary estimates of Australia's international trade in goods and services on a balance of payments basis and merchandise import and export statistics on a recorded trade basis.

2 Merchandise trade statistics on a recorded trade basis are compiled from information submitted by exporters and importers or their agents to the Australian Customs Service (ACS). Adjustments for coverage, timing and valuation are made to recorded trade data to convert them to a balance of payments basis. The main source for services data is the quarterly Survey of International Trade in Services.

3 More comprehensive quarterly estimates of Australia's trade in goods and services, together with comprehensive details of Australia's balance of payments are included in the quarterly publication, *Balance of Payments and International Investment Position, Australia* (cat. no. 5302.0). Detailed monthly statistics on merchandise trade are available on Time Series Spreadsheets or by subscription to tailored services.

CONCEPTS, SOURCES AND METHODS

4 The conceptual framework used in compiling Australia's merchandise trade statistics can be found in *International Merchandise Trade, Australia: Concepts, Sources and Methods, 2001* (cat. no. 5489.0).

5 The conceptual framework used in compiling Australia's balance of payments statistics is based on the Fifth Edition of the International Monetary Fund's *Balance of Payments Manual* (BPM5,1993). Descriptions of the underlying concepts and structure of the balance of payments and the sources, methods and terms used in compiling the estimates are presented in *Balance of Payments and International Investment Position, Australia: Concepts, Sources and Methods, 1998* (cat. no. 5331.0). To bring merchandise trade statistics on a recorded trade basis to a balance of payments basis, timing adjustments are made to ensure that the transaction is recorded in the period in which ownership changed, rather than in the period in which the transaction was recorded by ACS. Adjustments are also made to account for the change of ownership of goods not included in merchandise trade statistics. Chapter 6 of cat. no. 5331.0 provides more detail on the relationship between statistics on international merchandise trade on a recorded trade basis and on a balance of payments basis.

6 Both of the Concepts, Sources and Methods publications are available to download for free from the ABS website. Select *Methods, Classifications, Concepts & Standards*, then choose *ABS concepts, classifications and statistical standards* and then the catalogue numbers as above.

SEASONAL ADJUSTMENT

7 The estimates of international trade in goods and services on a balance of payments basis are seasonally adjusted, however the merchandise exports and imports statistics on a recorded trade basis are not. Monthly original estimates are volatile, being subject to calendar-related and large irregular influences. Seasonally adjusted estimates are derived by estimating and removing from the original series systematic calendar related effects, such as seasonal, trading day, length of month and moving holiday influences. Seasonal adjustment does not aim to remove the irregular or non-seasonal influences which may be present in any particular month. These irregular influences may reflect both random economic events and difficulties of statistical recording.

8 The seasonally adjusted statistics in this publication use the concurrent seasonal adjustment technique and Autoregressive Integrated Moving Average (ARIMA) Modelling to estimate factors for the current and previous months. Under concurrent seasonal adjustment, the estimates of seasonal factors are fine tuned as new original estimates become available each period. The seasonally adjusted estimates are subject to revisions at each reference month as the estimates of seasonal factors are improved. For more information on seasonal adjustment methods, see *Information Paper: An Introductory Course on Time Series Analysis, Jan 2005* (cat. no. 1346.0.55.001), *Time Series Analysis*

EXPLANATORY NOTES *continued*

SEASONAL ADJUSTMENT *continued*

Frequently Asked Questions, 2003 (cat. no. 1346.0.55.002), alternatively contact the Assistant Director, Time Series Analysis on (02) 6252 6345 or e-mail <time.series.analysis@abs.gov.au>.

ARIMA MODELLING

9 ARIMA modelling relies on the characteristics of the series being analysed to project future period data. ARIMA modelling is used on a case-by-case basis where it results in reduced revisions to seasonally adjusted series when subsequent data become available. The projected values are temporary, intermediate values, that are only used internally to improve the estimation of the seasonal factors. The projected data do not affect the original estimates and are discarded at the end of the seasonal adjustment process. The ARIMA model is assessed as part of the annual reanalysis and, following the 2008 annual re-analysis, 41 of the 42 directly seasonally adjusted trade in goods and services time series use an ARIMA model. For more information on the details of ARIMA modelling see *Feature article: Use of ARIMA modelling to reduce revisions* in the October 2004 issue of *Australian Economic Indicators* (cat. no. 1350.0).

TREND ESTIMATES

10 The month-to-month movements of the seasonally adjusted estimates may not be reliable indicators of trend behaviour because they include irregular or non-seasonal movements. Trend estimates are derived by applying a 13-term Henderson moving average to the seasonally adjusted series. The use of a 13-term Henderson average can result in revisions to the estimates for the most recent six months as additional observations become available. Revisions can also occur because of changes in the original data and as a result of the re-estimation of the seasonal factors. For more information on trend estimates methods, see *Information Paper: A Guide to Interpreting Time Series - Monitoring Trends* (cat. no. 1349.0), alternatively contact the Assistant Director, Time Series Analysis on (02) 6252 6345 or e-mail <time.series.analysis@abs.gov.au>.

SIGN CONVENTION

11 In keeping with balance of payments conventions, where statistics are on a balance of payments basis, credit entries (exports) are shown without sign and debit items (imports) are shown as negative entries. For statistics on a recorded trade basis, both imports and exports are shown without sign. The calculation of percentage changes on balance of payments debit items are made without regard to sign. References to balance of payments debit items in Key Figures, Key Points, and Analysis and Comments are also made without regard to sign.

COMMODITY BREAKDOWNS OF GOODS

12 For details of the classifications used to present goods exports (credits) and imports (debits) on a balance of payments basis, see tables 6.6 and 6.7, respectively, in *Balance of Payments and International Investment Position, Australia: Concepts, Sources and Methods, 1998* (cat. no. 5331.0).

13 The correspondences used to compile statistics on a Balance of Payments basis were updated in the July 2008 issue with estimates for all time periods recompiled on the basis of the revised correspondences to maintain consistency in the time series.

14 The recorded trade statistics shown in tables 12 and 13 are classified by the Standard International Trade Classification (SITC). Imports and exports of goods at a more detailed level are available from the Time Series spreadsheets. All data from July 2005 are presented according to SITC Rev 4 and data prior to July 2005 are presented according to SITC Rev 3. For details refer to the July 2008 issue of this publication.

COMMODITY BREAKDOWNS OF SERVICES

15 The quarterly detailed services data published in table 11 are consistent with the monthly aggregates shown in table 9.

16 Monthly indicators for many of the services components that are only surveyed quarterly are not available. In particular, the Freight and Other transportation components of Total services credits are not available for publication on a monthly basis.

EXPLANATORY NOTES *continued*

COMMODITY BREAKDOWNS OF SERVICES *continued*

The estimates for these items shown in table 9 are therefore derived by dividing the quarterly estimate by three. Where quarterly survey data are not available, freight debits are derived directly from imports data for the reference month as a difference between total merchandise cost, insurance and freight (CIF) and free on board (FOB), adjusted to reflect timing and processing adjustments. For freight credits and other transportation credits and debits, estimates are derived by extrapolating the last month's data by an average of movements for the same month over the three previous years.

CONFIDENTIALITY OF MERCHANDISE TRADE STATISTICS

17 The release of statistics for certain merchandise trade commodities is restricted in order to prevent the identification of the activities of an individual business, where this is requested by the business concerned. These restrictions do not affect the total value of exports and imports, but they can affect statistics at the country, state and commodity levels. Imports data that have the confidentiality restrictions "No commodity details" or "No value details" are aggregated into a single confidential commodity code. For data prior to September 2008, these data are added back into the appropriate state total and country total (i.e. these totals show the correct level of trade). From September 2008 these confidential data are not added back. Instead the confidential data are published as "No country details" in the country totals and "State not available for publication" in the state totals. Therefore, country and state totals from September 2008 may not represent the actual amount of trade in each country / state but only the trade in commodities without a "No commodity details" or "No value details" restriction. For information on the confidentiality restrictions applied to the merchandise trade statistics in this publication, refer to the current *International merchandise trade: Confidential Commodities List (CCL)* (cat. no. 5372.0.55.001) which can be accessed from ABS web site.

TOURISM RELATED SERVICES

18 The tourism related services memorandum items provide timely indicators of the movements in tourism related activities, not an absolute measure of the level of these activities. These series are not compiled on a balance of payments conceptual basis. However, they do provide a reasonable approximation of world tourism related activities.

19 The memorandum items have been derived by re-aggregating relevant components of the international trade in services series of the balance of payments accounts. The tourism related indicator has been derived by combining total travel services (business, education-related and other personal travel) and passenger transportation services (which includes agency fees and commission receipts for air transport).

SERVICES BY STATE AND BY PARTNER COUNTRY

20 Annual services data by state and by partner country are released twice yearly. Calendar year data are usually released with the March issue of this publication and financial year data are released with the September issue. Refer to Time series data for details.

21 Services credits are classified by the state of provision, while services debits are classified by the state of consumption. The state allocations for transportation, travel and communication services are based on a number of indicators including merchandise trade statistics by state, overseas passenger arrivals and departures by state of clearance and data provided by the Department of Education, Science and Training. The allocation for other services (about 25% of all trade in services) is primarily based on the location of the business reporting the information, which serves as a proxy for the state of provision/consumption of that service. The data should be used with care but are considered suitable for analysis over time.

22 A comprehensive explanation of the data sources used and the methodology applied in the compilation of partner country statistics is provided in Chapter 17 of *Balance of Payments and International Investment Position, Australia - Concepts, Sources and Methods* (cat. no. 5331.0). Approximately 7% of total services credits and 5%

EXPLANATORY NOTES *continued*

SERVICES BY STATE AND BY PARTNER COUNTRY *continued*

of total services debits for 2006–07 are either confidential, or unable to be allocated to individual countries.

ABS DATA AVAILABLE

23 More detailed balance of payments and recorded merchandise trade data, including forward seasonal factors are available as time series spreadsheets or data cubes from the ABS website.

24 More detailed merchandise trade data by commodity, country and state, and statistics included in this and related publications are available on request. Inquiries should be made to the National Information and Referral Service as shown on the back of this publication.

RELATED PRODUCTS AND PUBLICATIONS

25 Users may also wish to refer to the following publications which can be downloaded free of charge from the ABS web site:

- *Balance of Payments and International Investment Position, Australia* (cat. no. 5302.0) – issued quarterly
- *International Merchandise Imports, Australia* (cat. no. 5439.0) – issued monthly
- *International Trade Price Indexes, Australia* (cat. no. 6457.0) – issued quarterly
- *Balance of Payments and International Investment Position, Australia: Concepts, Sources and Methods* (cat. no. 5331.0)
- *Information Paper: Quality of Australian Balance of Payments Statistics* (cat. no. 5342.0)
- *International Merchandise Trade, Australia: Concepts, Sources and Methods* (cat. no. 5489.0)
- *A Guide to Australian Balance of Payments and International Investment Position Statistics* (cat. no. 5362.0.55.001).

26 Current publications and other products released by the ABS are available from the *Statistics View*. The ABS also issues a daily *Release Advice* on the web site which details products to be released in the week ahead.

CAUTIONARY NOTE

27 The tables in this publication are presented on two bases. Tables 1–11 contain estimates of Australia's international trade in goods and services which have been adjusted for coverage, valuation and timing to a balance of payments basis. Tables 12–15 contain estimates of merchandise exports and imports based on Australian Customs Service records. Paragraph 5 of the Explanatory Notes provides an explanation of the difference between these bases.

ROUNDING

28 Where figures have been rounded, discrepancies may occur between sums of the component items and totals. Percentage movements are calculated from data at the level of precision presented in this publication (i.e. \$m) except for international merchandise trade tables.

ABBREVIATIONS

- \$b billion (thousand million) dollars
- \$m million dollars
- ABS Australian Bureau of Statistics
- APEC Asia Pacific Economic Co-operation
- ASEAN Association of South-East Asian Nations
- n.e.s. not elsewhere specified
- n.i.e. not included elsewhere
- OECD Organisation for Economic Co-operation and Development
- SAR Special Administrative Region
- SITC Standard International Trade Classification

APPENDIX RELATED ARTICLES

<i>Article</i>	<i>Source(a)</i>	<i>Issue</i>
Investment		
Foreign ownership of equity	5302.0	Sep qtr 2007
Foreign currency exposure	5308.0	Mar qtr 2005
Kangaroo bonds	5302.0	Sep qtr 2004
Gross external debt	5302.0	Sep qtr 2003
Balance of payments		
International comparison of balance of payments statistics	(b) 5363.0	1999–2000
Merchandise trade		
Number and characteristics of Australian exporters	5368.0.55.006	2006–2007
Export and import invoice currencies, 2006	5368.0	Dec 2007
100 years of international trade statistics	5368.0	Oct 2007
New methodology for deriving counts of Australian exports	5368.0	Feb 2006
Australia's Importers, 2003–04	5368.0	Nov 2004
Australia's Exporters, 2003–04	5368.0	Oct 2004
Australia's trade with the USA	5368.0	Mar 2004
Foreign ownership of Australian exporters and importers	5496.0.55.001	2002–2003
Major commodities traded by Australia, 1991 to 2000	(b) 5422.0	Dec qtr 2000
Trade in services		
International trade in services by partner country, 2006, preliminary	5368.0	Dec 2006
Changes to International trade in services statistics, August 2006	5368.0	Aug 2006
Changes to International trade in services travel statistics	5368.0	Aug 2005
Finance		
Impact of 2003–2004 farm season on Australian production	1350.0	Oct 2003
Recent trends in construction and first home buyers finance	5609.0	Mar 2002
Household sector data in the financial accounts	5232.0	Mar qtr 2002
Technical information		
Impact of introducing Revision 4 of the Standard International Trade Classification	5368.0.55.010	2008
Changes to international trade statistics July 2008	5368.0.55.009	2007–2008
Changes on 1 January 2007 to Statistical Codes in the AHECC and the Customs Tariff	1233.0.55.001	Nov 2006
ABS implementation in January 2007 of revisions to international trade classifications, 2007	5368.0.55.005	June 2006
Revised treatment of Goods for Processing in Merchandise Trade and Balance of Payments Statistics	5368.0	May 2006
Impact of Customs and ABS changes on import statistics from October 2005	5439.0	Oct 2005
ABS management of the impact of the implementation of the imports component of the New Customs System	5439.0	Aug 2005
Changes to country and port classifications	5368.0	May 2003
Implementation of New Customs Systems	5368.0	Aug 2004
The effect of customs changes on export statistics	5422.0	Jun qtr 2002
Data confidentiality	5422.0	Dec qtr 1999

(a) In the ABS web site home page, select Key Products; Papers & Articles; ABS Papers/Feature Articles; Papers/Feature Articles by Catalogue Number.

(b) This article can be found in pdf format by referring to the Downloads page of the specified issue of this publication on the ABS web site.

FOR MORE INFORMATION . . .

INTERNET **www.abs.gov.au** the ABS website is the best place for data from our publications and information about the ABS.

INFORMATION AND REFERRAL SERVICE

Our consultants can help you access the full range of information published by the ABS that is available free of charge from our website. Information tailored to your needs can also be requested as a 'user pays' service. Specialists are on hand to help you with analytical or methodological advice.

PHONE 1300 135 070

EMAIL client.services@abs.gov.au

FAX 1300 135 211

POST Client Services, ABS, GPO Box 796, Sydney NSW 2001

FREE ACCESS TO STATISTICS

All statistics on the ABS website can be downloaded free of charge.

WEB ADDRESS **www.abs.gov.au**